

Developing Principles and Functioning Algorithms of the Hardware-software Complex for Electrical Impedance Tomography of Biological Objects

Grayr Karenovich Aleksanyan¹, Nikolay Ivanovich Gorbatenko¹,
Artem Igorevich Kucher¹, Konstantin Mikhailovich Shirokov
and Chan Nam Phong²

¹Platov South-Russian State Polytechnic University (NPI),
132, Prosvescheniya ul., Novocherkassk, 346428, Russian Federation
²Le Quy Don Technical University 236, Hoang Quoc Viet, Ha Noi, Viet Nam

doi: <http://dx.doi.org/10.13005/bbra/2251>

(Received: 05 July 2015; accepted: 10 August 2015)

This paper discusses the general principles of developing, and algorithms of operation of the hardware and software complex for electrical impedance tomography of biological objects, and proposes technical solutions for building the device as a whole, and in separate blocks. It is proposed to use the modular-assembly principle as the basis of the hardware-software complex. The advantages of the proposed approach and the possibilities of its implementation in the ready device are described. The requirements to the electrode belt are defined, and structural diagrams are developed for the measurement board, generator board and the microprocessor unit. The principles of interaction between main units are developed. The archiving unit and record-keeping procedures, display unit, control unit, the unit of communication with a PC are described. Attention is paid to development of the patient's records. The main algorithms for device operation are defined, and the operation diagram is proposed. The logics of the whole hardware-software complex operation is explained. It is proposed to develop independent program products for measuring reconstruction and data visualization from a biological object. To ensure portability and mobility, a battery pack is provided in the cabinet. It is emphasized that special attention should be paid to the relation between the hardware and software complex and the modern methods and communication protocols for processing tomographic images, such as DICOM.

Keywords: Electrical impedance tomography, biological object, medical imaging, generator board, measurement board, microprocessor unit, algorithm, reconstruction, visualization, block diagram, software, electrodes belt.

The structure of modern non-invasive medical imaging techniques used in clinical practice in recent years includes rapidly developed electrical impedance tomography (EIT)^{4,5,6} that is a branch of bioimpedancemetry^{1,2,3}. This method has given a good account of oneself in breast examination⁷, monitoring of lung ventilation^{8,9,10}, and studying

internal features of organs and tissues. The EIT method has several advantages, as compared to the existing technical means of medical imaging, such as the ease of devices hardware implementation, dimensions and weight, the ease of maintenance, and safety for the patient and the medical personnel. At present, there are several commercially available EIT devices¹¹. However, there are disadvantages that limit a wide spread of the EIT method in clinical practice. These disadvantages are known, they include, in the first

* To whom all correspondence should be addressed.

place, the mathematical apparatus of data processing, low devices resolution and sensitivity, limited 3D imaging possibilities, etc. To solve these problems, many studies are performed worldwide¹⁰ to develop new approaches, methods and EIT devices aimed at addressing the comprehensive issues that limit the scope and directions of development.

Methods

This paper, in accordance with the schedule of works and technical specifications of the project supported by the Ministry of Education and Science of the Russian Federation, No.14.574.21.0029, unique project ID - RFMEFI57414X0029, is focused on developing principles of development and algorithms of functioning of the hardware and software complex for electrical impedance tomography of biological objects (HSC EIT BO). Based on the review and analysis of the subject area, studying scientific, technical and regulatory documentation, technical solutions in electrical impedance tomography are proposed, aimed at obtaining new results in this field of research, which need to be solved for the proposed full-scale modeling approach [11]. During the research, the global level of EIT works, and existing technical solutions were estimated. Work is a logical continuation of project No. 14.574.21.0029 (unique project ID RFMEFI57414X0029), and is consistent with earlier undertaken (2014) complex of works in patent research, market research, analysis of algorithms of two-dimensional and three-dimensional medical imaging, and analytical reviewing of the current state of the problem.

RESULTS

The design and operation of HSC EIT BO is based on the modular principle, which is one of the modern and progressive approaches to designing information and measuring systems for various purposes. This is due to the following reasons:

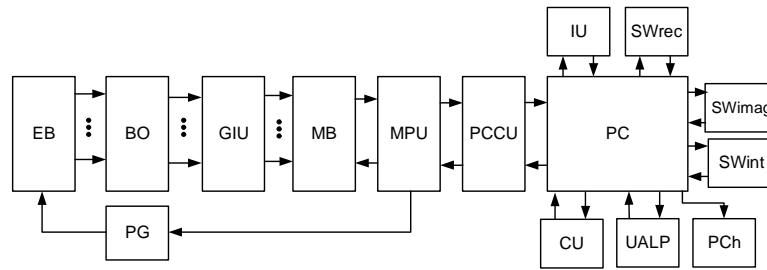
- 1) During design and development of the HSC EIT BO, an indispensable condition is to use modern electronic devices for collecting and processing information, visualizing reconstructed data, logging the inspection procedure, generating and accounting for patient charts and records of examinations.
- 2) Each functional block has to be implemented on a separate printed circuit board. This will ensure functional flexibility of the complex, improve its maintainability, and reduce the cost of consumables and maintenance of the equipment. Some HSC EIT BO units may be autonomous (independent), and the device is designed on a separate printed circuit boards with the possibility of connection with the neighboring units.
- 3) In case of the necessity to increase functionality of the HSC EIT BO, to change the conditions of the procedure (or the study), to increase the number of recording channels, and automation of existing units, the use of the block-and-modular principle will greatly simplify and speed up the modernization of the whole HSC without additional structural modifications.
- 4) The use of the block-and-modular principle makes it possible to meet aesthetic and ergonomic requirements, as well as to implement the principles of standardization and unification to the HSC EIT BO.
- 5) The modular principle ensures high operational reliability, and the ease of maintenance for all HSC EIT BO in general.

Figure 1 shows a scheme that explains the principle of building the HSC EIT BO. The scheme has been developed in accordance with the recommendations and results of design described in¹².

The composition of these units may be modified depending on the objectives of the study. Structurally, all units are interconnected with each other (or with neighboring blocks) via the addressing and signaling lines. Communication is ensured via standard connectors.

The core of the information and computing system is a PC with specialized software (SWex, SWimage, SWint) (Figure 2). The personal computer performs processing, reconstruction, visualization, archiving, storage and transmission of experimental information, and is also responsible for generating control commands and testing efficiency of the HSC EIT BO. The personal computer should preferably be a laptop computer.

The electrodes belt EB should be a universal device for picking potentials from the



This scheme (Figure 1) uses the following designations:

- PG - probe current generator board;
- BO - biological object;
- EB - electrodes belt;
- MB - measurement board;
- GIU - galvanic isolation unit;
- MPU - microprocessor unit;
- PCCU - PC communication unit;
- IU - indication unit;
- PC - personal computer;
- CU - PC control unit;
- SWrec - software for reconstruction of BO's internal structures;
- SWimag - software for imaging of BO's internal structures;
- SWint - software for integration with specialized SW of the medical institution;
- PCh - the unit for generating patients' charts, reports, surveys;
- UALP - the units for archiving and logging procedures, storing numerical examination data and images.

Fig. 1. A scheme that explains the principle of building the HSC EIT BO

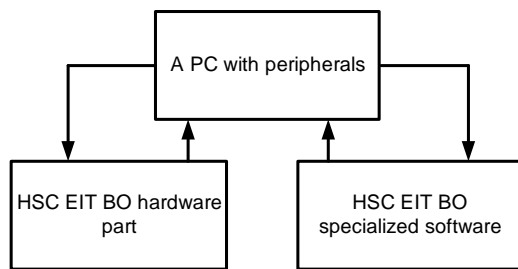


Fig. 2. Structural composition of the HSC EIT BO

surface of the BO. For the ease of experimental studies, the EB should ensure easy replacement of electrodes.

In developing the EB, it is also necessary to use the modular principle. This means that the EB should consist of electrodes, a rubber strap, an adapter for electrodes, the electrode cable, and a standard connector for transmitting signals to the MB connector (Figure 3).

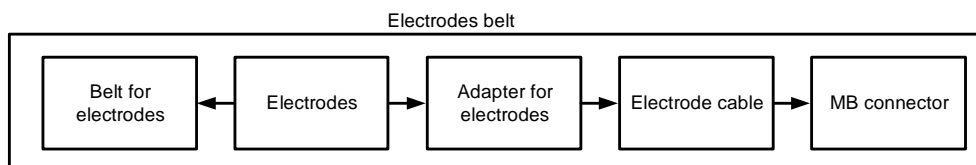


Fig. 3. The principle of EB for HSC EIT BO

Such a design extends functionality of the EB listed below.

- a) The use of the rubber strap ensures reliable contact between patient's skin and the electrode.
- b) The adapter for electrodes makes it possible to use (at the request of the staff) both reusable and disposable electrodes.

- c) Moreover, depending on the research tasks, it is possible to easily switch electrodes (of different shape, area, material, content, etc.). The electrode cable should be shielded and designed for the medical use. This will reduce the risk of additional interference when registering potentials from the patient's body. In addition, the diameter of

- the plug electrode cable should match the diameter of the contact hole in the electrodes adapter.
- d) The EB should have the possibility (if necessary) to replace the electrodes plug. This is achieved by the use of the “plug-button” adapter.
- e) The use of unified standard connectors for connecting the EB with the MB simplifies the process of pairing units and increases the maintainability of the EB.
- f) The EB should have a possibility of fast processing electrode surfaces (disinfection, lubrication, etc.).
- The design of the EB should provide the possibility of changing the number of electrodes. It is essential for performing the research in the subject area. The simplest and the most reliable method is choosing a rubber strap with holes at a certain distance.
- The measurement board MB should be a unit on a separate printed circuit board. The principle of MB for HSC EIT BO is shown in Fig. 4.

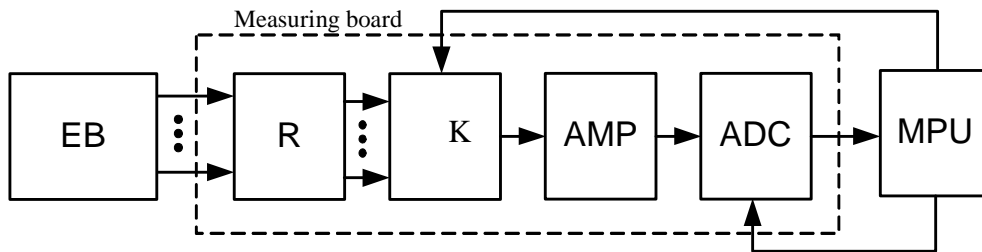


Figure 4 uses the following designations:

R - standard multiple contact connector;

AMP - amplifier;

K - switch;

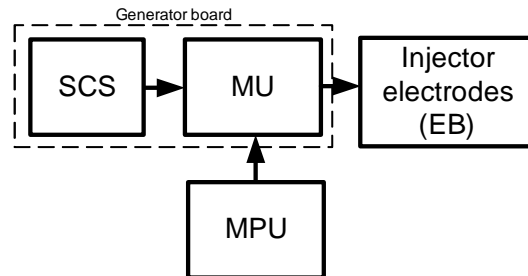
ADC - analog-to-digital converter.

Fig. 4. The principle of MB for HSC EIT BO

With regards to the EIT specifics, the capacity of the ADC should be at least 12 bits. The composition of HSC EIT BO should include the PCh unit, as an integral part of modern self-contained medical information and measuring systems. This will lay into the device the principles of logging, archiving and individualization of patients examination results, and will enable automation of the measuring and diagnostics process. In developing the PCh unit, one should be guided by modern legislation of the Russian Federation, the existing regulatory and technical documents, and state standards. Special attention should be paid to personal data protection.

The probing current generator board PG should be made on a separate printed circuit board. The output signal from the PG should be sent to the injecting electrodes via a standard connector. The principle of PG for HSC EIT BO is shown in Figure 5.

The UALP (unit for archiving and logging procedures, storing numerical examination data and



SCS - current source circuit; - MU - multiplexers unit.

Fig. 5. The principle of PG for HSC EIT BO

images) should be computer-based with the use of SWex, SWimag, SWint.

In accordance with the technical design specifications, availability of PC in the HSC EIT BO is a prerequisite for performing applied research. The device should have controls to start and stop the measurement procedure. They should be located both on the hardware, and implemented in the software of the HSCEIT BO, for initiating and

stopping the procedures of reconstruction and visualization only in the SW of the HSC EIT BO. The IU indication unit is required for alerting and informing the operator (doctor, researcher, etc.) during his work with the HSC EIT BO (procedure, results, etc.). The IU is used for displaying visualized structures of the BO, their analysis and interpretation. The IU should be implemented on the monitor of a PC. The PC monitor is an indispensable element, according to the technical design specifications.

The control unit CU makes it possible to control the procedure of the survey, set operating modes, initiate and stop the HSC SW, save the results of measurement, processing, analysis, reconstruction and imaging both in PC memory and on external media.

Since the HSC EIT BO is based on a PC with peripherals, the presence of PCCU unit is a necessary condition. The principle of an HSC EIT BO with a PCCU unit is shown in Figure 6.

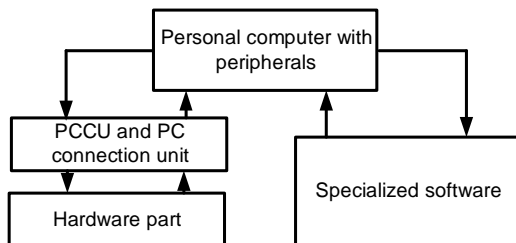


Fig. 6. The principle of an HSC EIT BO with a PCCU unit

In accordance with the technical specifications, the PC communication unit should be implemented using a standard USB serial interface.

The unit for archiving and record-keeping procedures, storing numerical data of examination and imaging UALP should be implemented on the basis of a PC with peripherals and an IU. It is also necessary to use the computing capacity and functional capabilities of modern PCs and SW [13]. Archiving and logging means storing the results of patients examination, as and all the information about the place of registration, personnel, images of all 10 of tomographic cross-sections of the BO. There should be a possibility to integrate the developed SW with specialized software of the medical institution, where the HSC EIT BO is

operated. To do this, the objects of standardization should be defined, and proposals for standardization and unification developed.

The microprocessor unit MPU is a standalone unit with power supply via a serial USB interface. The principle of MPU interaction with other units is shown in Figure 7.

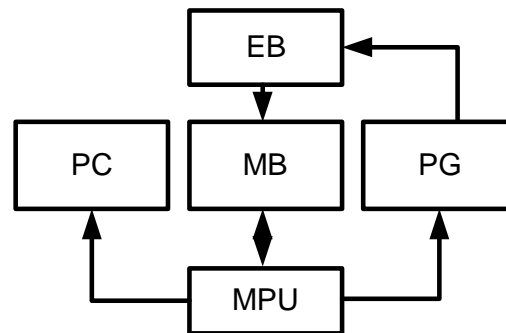


Fig. 7. The principle of MPU interaction with other units

It should control the operation of PG and MB via commands from the PC, and ensure consistency of PC, PG and MB operation.

In the design of the HSC EIT BO, it is necessary to use modern electronic base. Organization and control of computing processes should be performed with the use of microprocessor technology. For the development of MPU SW, it is appropriate to use modern development languages and tools that use computing resources of the MPU in an optimal way.

Structurally, all units of the HSC EIT BO should be located and secured in a plastic housing, the front panel should have device controls, power devices, EB connectors, and a connector for connection with the PC. The housing should protect the internal parts of the device from dust and moisture, and have a convenient handle for carrying the device. The housing of the HSC should have a battery compartment. This will ensure overall mobility and portability of the HSC EIT.

The hardware and software complex for electrical impedance tomography of biological objects is a complex technical device that comprises various functional units. In this regard, in accordance with the modular principle specified in the technical design specifications as the basis of

the HSC EIT BO, it is necessary to define the algorithms of each block operation, and the algorithms of units syncing. The sequence of

actions in working with the HSC EIT BO is shown in Figure 8. The user must be able to control the device at any stage of its use.

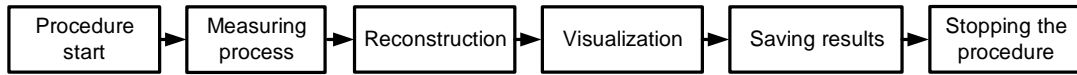


Fig. 8. Sequence of actions when working with the HSC EIT BO

Operation of the HSC EIT BO should begin with starting an examination. Next, the user should start the measurement process, followed by the algorithms of reconstruction and

visualization. The results of processing the measured data, and the measurement data are stored in the non-volatile memory of the HSC EIT BO. The user can stop the examination procedure

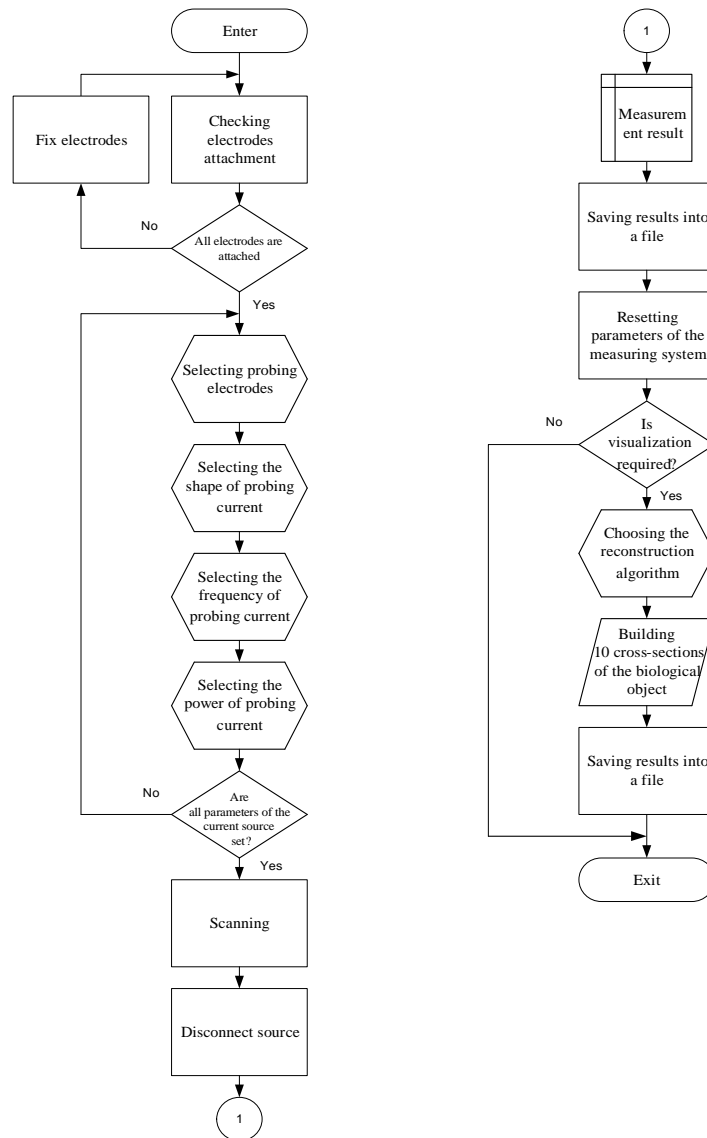


Fig. 9. Block diagram of the HSC EIT BO functioning

at any moment. In this case, the unsaved data will be lost, and it will be possible to resume the procedure only after starting a new measurement cycle.

In general, the algorithm of the HSC EIT BO operation is shown in Figure 9. It has been developed in accordance with the Terms of Reference for applied research, and with the principles of the HSC EIT BO design¹¹.

High-frequency electric current (1 to 5 mA) is injected into the body by connecting the current source board with high output resistance. During measurement, the output of the current source is connected to one of the measuring electrodes by using a multi-channel multiplexer. The potentials are recorded from the remaining electrodes on the surface of a biological object. Then the current source is connected to the next measuring electrode. This cycle is repeated until all electrodes have been connected. Thus, the current source is serially connected to each measuring electrode, and measurement is performed.

The user sets basic parameters of the current source: current type, current strength, and current frequency. It is possible to use software to select the number of possible electrodes.

A possibility of generating various systems of lead-outs is provided for the research when picking potentials from the BO. For convenience and clarity, the monitor screen should display a map of electrodes location, indicating the injecting and measuring electrodes and electrodes with bad contact with the surface of the biological object. Thus, the user can easily set up his own plan of experiment, describe the measurement report, and test developed algorithms and methods.

The HSC EIT BO uses 10 belts with 16 electrodes in each for picking potentials. According to the technical requirements, there should be a possibility to obtain 10 tomographic slices of the BO with the pitch of 5 mm. The software should assess the time required for image reconstruction. If necessary, the user can save resulting images of the BO slices.

The HSC EIT BO makes it possible to reset user parameters. Thus, the device may be started by re-specifying the measuring and injecting electrodes, and by setting the current source

parameters in the user interface.

The HSC EIT BO provides the possibility of using the developed software without the hardware. To do so, the user only has to open or manually download the source data file and then run the calculation, reconstruction and visualization algorithms. Figure 10 shows the logic of the HSC with the regard of this possibility.

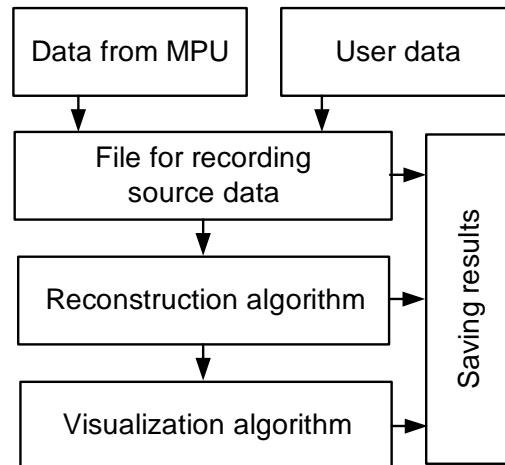


Fig. 10. The logics of HSC EIT BO with the data from HSC or the data entered by the user

All results, as previously described, are written to the disk storage in the PC. There is a possibility to copy the data from the storage location, and use software to open files for reading and subsequent data processing.

Figure 11 shows the general approach to the HSC EIT BO operation.

During the device operation, and making research, all results of measurement, processing and analysis are saved into a special folder in the PC that belongs to a specific person. Moreover, for primary processing of the measurement, SWrec and SWimagread data from a special file located in this folder, which is responsible for measuring potentials with the BO. Next, the process of reconstruction and visualization of the internal structure, and the result of these stages are written back into the folder. Information from PCh and UALP units is recorded into the same folder. Thus, a special storage place is created for a particular person for all information and related documents received during the tomographic examination. In order to ensure contingency with specialized software of the medical institution, the PCh and

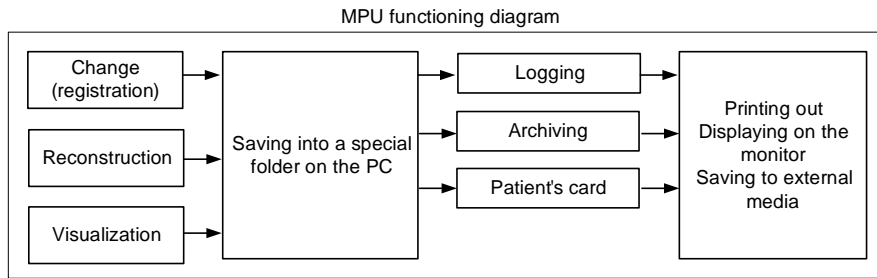


Fig. 11. The general approach to the HSC EIT BO operation

the business processes should be formed in accordance with the state standards [14,15].

The algorithm of HSC EIT BO operation related to processing the data from the BO may be represented as follows (Figure 12).

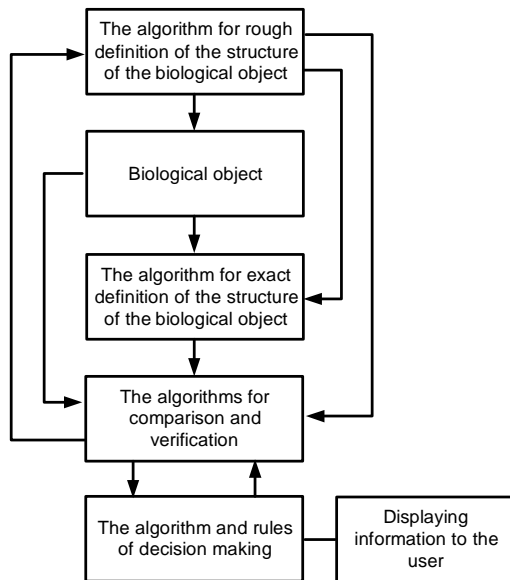


Fig. 12. The sequence of HSC EIT BO algorithms and the proposed scheme of the device functioning

The whole procedure of processing data from the BO is run in two stages. The first stage is running the algorithm for rough definition of the object boundaries, building an approximate model of the BO, defining the boundary and initial conditions for subsequent algorithms.

Then the second stage starts, i.e., running the algorithm for precise definition of the BO structure. In this step, the BO model is adjusted (or set), conductivity of internal structures is calculated, their location and depth are defined,

etc., and electrical conductivity of the BO is reconstructed and visualized. There is a possibility to use for the research specialized software products [16,17,18] that implement the proposed reconstruction and visualization methods simultaneously with the existing ones. Thus, the tomographic information is defined. It will be later used in the procedure of comparing and verifying the results with the data obtained in the previous stages. With the use of the procedure and certain rules for decision making, an opinion about the results of the study is finally formed with generating the protocols of the examination. Further, all information is displayed to the user in visual form and is stored in non-volatile memory of the device. The HSC software makes it possible to display tomographic images of the BO in several cross-sections at the discretion of the user.

In the design and manufacturing of the HSC EIT BO, one should be guided by modern Russian and foreign normative documents and recommendations related to the devices and systems of medical purpose. Special attention should be paid to the relation of the HSC EIT BO to the modern methods and communication protocols, e.g., to using tomographic images according to the DICOM industry standard (the standard for processing, storing, printing and transmitting information in medical imaging systems)^{19,20}. Special attention should be paid to the implementation of the user interface, industrial design and ergonomic requirements. In accordance with the technical specifications, the weight of the electronic unit of the developed HSC should not exceed 2 kilograms. Currently, work is underway for designing the user interface of the HSC, and development of a number of algorithms for reconstruction, visualization of electrical

conductivity of internal structures of the BO, and for statistical processing of measurements and processing results. The algorithms are load-tested, and therefore are not mentioned in this paper.

Successful implementation of the above-described principles of design, and algorithms of device functioning will make it possible to develop a modern HSC for biology and medicine. At this stage, it is advisable to develop functional and electric circuit diagrams of units, to ensure their interface, and to perform experimental studies of the circuit design and software.

CONCLUSION

Thus, in course of the research performed within the framework of this paper, the following results have been obtained:

- 1) The use of the modular principle has been considered and justified for being used as the basis for the EIT devices design. The advantages of the proposed approach and the possibilities of its implementation in the ready device are described.
- 2) A structural diagram of the HSC EIT BO has been developed, and the units and their purpose have been described.
- 3) The proposed structural composition of the HSC EIT BO has been discussed and described.
- 4) The principles of electrodes belts for HSC EIT BO have been developed. The best design has been described. Recommendations in design and manufacturing electrodes belts have been mentioned.
- 5) The principle of designing measuring boards for the HSC EIT BO has been proposed and described, a block diagram has been provided, and the purpose of each unit has been presented.
- 6) The principle of designing generator board for probing hi-frequency current source for the HSC EIT BO has been proposed and described, a block diagram has been provided, and the purpose of each unit has been presented.
- 7) The principles of interaction between HSC EIT BO main units have been described.
- 8) The block diagram of the HSC EIT BO

functioning algorithm has been developed, and the device operation logics has been proposed. General algorithms and approaches have been proposed for operation of the entire device.

The areas for further research lie in the field of development and creation of MB and PG electronic modules, modeling electronic components, for example, in MicroCap²¹ for studying the device operation modes, the assessment of metrological characteristics. It is necessary to develop software for the microcontroller unit that will be used for controlling MB and PG. In the nearest future it is planned to develop the conceptual design and software documentation layout for the HSC EIT BO, and to conduct comprehensive experimental studies in order to identify the problem areas, and to classify faults and ways of their removal in accordance with GOST 2.125-2008. In parallel, work is underway for defining the necessary number of electrodes, and their optimal location on the BO for the EIT-specific methods. A compulsory component of successful creation of HSC EIT BO is the development of user guides for the modelboard, which will make it possible to logically organize the entire design and development process. After successful execution of the tasks, a modelboard of the HSC EIT BO will be created, which will meet the requirements of the technical specifications of project #14.574.21.0029.

ACKNOWLEDGMENTS

The research is performed within the framework of the Federal Target Program "Research and Development on Priority Areas of Developing Scientific-Technological Complex of Russia for years 2014-2020", with the financial support of the state in the name of the Ministry of Education and Science (agreement number 14.574.21.0029). The unique identifier of the project is RFMEFI57414X0029.

REFERENCES

1. Nikolaev, D.V., Smirnov, A.V., Bobrinskaya, I.G., & Rudnev, S.G. (2009). *Bioimpedance analysis of human body composition* (pp. 392). Moscow: Nauka. ISBN 978-5-02-036696-1 (transl.).

2. Rudnev, S.G., Soboleva, N.P., Sterlikov, S.A., Nikolaev, D.V., Starunova, O.A., Chernykh, S.P., et al. (2014). *Bioimpedance study of body composition in the Russian population* (pp. 493). Moscow: RIO TSNIIOIZ.
3. Martinsen, O.G., & Grimnes, S. (2008). *Bioimpedance and Bioelectricity Basics Academic Press* (2 edition, pp. 488).
4. Pekker, K.S., Brazovsky, Y.S., & Usov, V.Y. (2004). *Electrical impedance tomography* (pp. 190). Tomsk: "Scientific-Technical Literature Publishers" LLC.
5. Rozhkova, N.I., Fomin, D.K., Nazarov, A.A., Jacobs, O.E., & Borisova, O.A. (2009). Possibilities of electroimpedance tomography in detecting structural changes in biological tissues: experimental data. *Bulletin of the Russian scientific center of radiology and nuclear medicine of the Ministry of Health of the Russian Federation*, 9. Retrieved from: http://vestnik.rncrr.ru/vestnik/v9/papers/rozhkova_v9.htm.
6. Korzhenevski, A.V. (2009). *Quasi-static electromagnetic tomography for biomedical science* (Thesis of Phd in Physical and Mathematical Sciences, pp. 255). Moscow.
7. *Website of the Impedance Medical Technologies Company (LLC "IMT")*. Retrieved from: <http://www.medimpedance.ru>.
8. *Website of the Swisstom AG Company*. Retrieved from: <http://www.swisstom.com>.
9. *Website of the SALVIA Medical Company*. Retrieved from: <http://salvia-medical.de>.
10. *Website of the Drägerwerk AG Company*. Retrieved from: <http://www.draeger.com>.
11. Aleksanyan, G.K., Gorbatenko, N.I., & Tarasov, A.D. (2014). Modern Trends in Development of Electrical Impedance Tomography in Medicine. *Biosciences Biotechnology Research Asia*, 11, 85-91.
12. Aleksanyan, G.K., Gorbatenko, N.I., & Tarasov, A.D. (2014). Development of Hardware-Software Complex for Electrical Impedance Tomography of Biological Objects. *Research Journal of Applied Sciences*, Vol. 9, 12, 1030-1033.
13. Webster, J.G, Kamysko, I.V., & Kalashnik, D.A. (2004). *Medical devices. Development and Use* (pp. 720). Moscow: MeditsinskayaKniga.
14. GOST R 52636-2006 *Electronic clinical record. General provisions*
15. GOST R 53395-2009. *Health informatization. Main provisions*
16. *EIDORS: Electrical Impedance Tomography and Diffuse Optical Tomography Reconstruction Software*. Retrieved from: <http://eidors3d.sourceforge.net>.
17. *GREIT: "Graz consensus Reconstruction algorithm for Electrical Impedance Tomography"*. Retrieved from: <http://eidors3d.sourceforge.net/GREIT/index.shtml>.
18. *RES2DINV: Rapid 2-D Resistivity & IP inversion using the least-squares method*. Retrieved from: <http://www.geotomosoft.com>.
19. Pianykh, O.S. (2008). *Digital Imaging and Communications in Medicine (DICOM)* (pp. 379). DOI 10.1007/978-3-540-74571-6
20. *Digital Imaging and Communications in Medicine (DICOM)*. Retrieved from: <http://medical.nema.org/dicom>.
21. Amelina, M.A., & Amelin, S.A. (2013). *The Micro-Cap circuit simulation program. Versions 9, 10* (pp. 618). Smolensk, the Smolensk Branch of the NRU of the Moscow Power Engineering Institute.