

## Gut Microbiome of Two Different Honeybee Workers Subspecies in Saudi Arabia

Marfat Alatawy<sup>1,2\*</sup>, Sanaa G. Al-Attas<sup>1</sup>, Ahmad I. Assagaf<sup>1</sup>,  
Rashad R. Al-Hindi<sup>1</sup>, Khalid M. Alghamdi<sup>1</sup>, Jazem A. Mahyoub<sup>1</sup>,  
Alshehri D<sup>1,2</sup>, Al-Amrah H<sup>1</sup>, Alatawi H<sup>1,2</sup>, Edris S<sup>1,3,4</sup> and Ahmed Bahieldin<sup>1,3</sup>

<sup>1</sup>Department of Biological Sciences, Faculty of Science,  
King Abdulaziz University, Jeddah, Saudi Arabia.71491.

<sup>2</sup>Department of Biology, College of Science, Tabuk University, Tabuk, Saudi Arabia.74191.

<sup>3</sup>Department of Genetics, Faculty of Agriculture, Ain Shams University, Cairo, Egypt. 11241.

<sup>4</sup>Princess Al JawharaAlbrahim Centre of Excellence in Research of Hereditary Disorders  
(PACER-HD), King Abdulaziz University, Jeddah, Saudi Arabia.

<http://dx.doi.org/10.13005/bbra/2870>

(Received: 18 December 2020; accepted: 13 January 2021)

Honeybees play a vital role in the world's food supply by acting as essential pollinators in the agricultural fields. Interestingly, more than one third of the world's essential crops are honeybee's dependant. The adult honeybee workers harbour a simple specific bacterial spectrum in their guts with vital role in bees' health. Gut microbial diversity of adult honeybee workers was studied through targeting the V3 and V4 regions of the 16S rRNA gene via Illumina MiSeq. The study identified four phyla of the gut microbiomes in adult workers of the two-honeybee subspecies *A.m. jemenitica* and *A.m. carnica*. The most abundant phylum in microbiome of *A.m. jemenitica* was Firmicutes (48%), while Protobacteria and Actinobacteriaphyla were less abundant at figures of 31% and 10%, respectively. In microbiome of *A.m. carnica*, Firmicutes (57%) was also the most dominant phylum, while Protobacteria and Actinobacteria had lower prevalence at figures of 31% and 10%, respectively. At genus level, adult honeybee workers harboured a number of *Lactobacillus* spp. in their guts with relative abundance of 80% in *A.m. jemenitica* workers compared to 52% for *A.m. carnica* workers. Up to our knowledge, this is the first study of its kind on gut microbiome diversity in honeybee workers of different origins conducted in Saudi Arabia using high-throughput 16S rRNA gene sequencing technology. The results indicated that the variability in monophyletic origin of host of honeybee workers affected gut microbiota composition.

**Keywords:** *A.m. jemenitica*, *A.m. carnica*, 16S rRNA, high-throughput sequencing, diversity.

---

Honeybees belong to the genus *Apis*, which is known for its tremendous role in pollination. Unfortunately, honeybee population is recently declining with a potential risk on the agricultural

service and subsequently the food supply, not only locally in Saudi but also globally<sup>1</sup>. There is a known mutually beneficial relationship between honeybee gut microbiome and its host. The host provides

\*Corresponding author E-mail: mevalatawi@ut.edu.sa

the optimum environment for bacterial growth, while the bacterial community in honeybee guts aids in efficacy of nutrients absorption, optimum growth and development of the host and its ability to defend pathogens, and its adaptation to surrounding environment<sup>2</sup>. Honeybee gut represents a simple model system to study the relationship between gut microbiome with honeybeehosts<sup>3,4</sup>. The bacterial community in adult honeybee workers is diverse and estimated to reach one billion bacterial cells in each worker's gut<sup>5,6</sup>. Such a diversity in bacterial community is dependent on the type of flower that hosts the insect, as well as many other environmental factors<sup>7</sup>. Gut microbiome of honeybee (*Apis mellifera*) workers is composed of eight to nine core species<sup>8,9</sup>, e.g., *Bartonella apis*<sup>10</sup>, *Acetobacteraceae*<sup>11</sup>, *Parasaccharibacter*<sup>11</sup>, *Snodgrassella alvi*<sup>12</sup>, *Bifidobacterium asteroides*<sup>13</sup>, *Lactobacillus sp.*<sup>14</sup>, *Frischella perrara*<sup>15</sup> and *Gilliamella apicola*<sup>12</sup>.

The two most common bee species that are widely distributed throughout the kingdom of Saudi Arabia are the indigenous *Apis mellifera jementica*, which is a native species, and *Apis mellifera carnica*, which is imported from Egypt<sup>16</sup> as honey production of domestic bees does not meet the growing demands in Saudi Arabia. Moreover, the production cost is relatively high. Exotic bee colonies have been imported over time, reaching 200,000 bee packages annually<sup>16</sup>. It is well known for local beekeepers that the indigenous bees *A.m. jementica* highly tolerates local stressful conditions when compared with exogenous races *A.m. carnica*, particularly during summer when the air temperature becomes extremely high. It is also noticed that at high temperatures, indigenous bees continue to forage for pollen and collect nectar, whereas imported bees will stop foraging<sup>16</sup>. Initial reports revealed that the subspecies of exotic honeybees have lower heat tolerance, shorter foraging durations and are more susceptible to Varroa mites when compared with indigenous bees<sup>16</sup>.

In the present study, we compared the gut microbiome composition and diversity of the adult honeybees of *Apis mellifera jementica* and *Apis mellifera carnica* in Saudi Arabia using high-throughput 16S rRNA gene sequencing technology.

## MATERIAL AND METHODS

### Sample collection, isolation of guts microbiota and DNA extraction

Five samples each from honeybee workers of *A.m. jementica* and *A.m. carnica* were collected in November 2019 from a single hive of Beekeeper Cooperative Association at Al Baha, Saudi Arabia. The collected samples were immediately stored at -80°C. For whole gut dissection of honeybee workers, surface disinfection was done using 1 ml aqueous ethanol (70%, v/v) for 45 sec. Dissected guts were, then, placed in a pre-frozen mortar and 700 µl S1 lysis buffer (Invitrogen, Thermo Fischer Scientific, USA) were added and guts were transferred to bead tube for extraction process. DNA of gut samples was extracted by the genomic DNA extraction kit (Invitrogen, Thermo Fischer Scientific, USA), and stored at -20°C for further molecular analysis.

### PCR amplification

PCR was run to amplify bacterial 16S rRNA gene of the variable regions V3-V4. The two universal primers used for PCR are 341F 5' -ACTCCTACGGGAGGCAGCAG-3' (forward primer) and 806R 5' -GGACTACHVGGGTWTCTAAT-3' (reverse primer). The PCR conditions were set as the following: one cycle for initial denaturation at 95°C for 5 min; 25 cycles of denaturation at 95°C for 30 sec followed by annealing at 56°C for 30 sec and primer extension at 72°C for 40 sec; and a one cycle for final extension at 72°C for 10 min. The generated PCR products were checked for quality and selected products were utilized in preparing Illumina DNA libraries. DNA sequencing was run using Illumina Miseq platform (Illumina, San Diego, CA) at Beijing Genome Institute (BGI), China to generate high-quality pair-ends of ~300 bp.

### Statistical analysis

The high quality paired reads produced in fastq files as raw data were de-multiplexed, quality-filtered and trimmed by trimmomatic package (Version 0.33) through Quantitative Insights Into Microbial Ecology 2 pipeline (QIIME2, v1.8.0). Obtained reads were merged into single sequence files by the Fast Length Adjustment of SHort

reads (FLASH, Version 1.2.11). In order to assign generated unique sequences into operational taxonomic units (OTUs), reads were tagged and clustered into OTUs with similarity cut off of 97% using the *de novo* OTU piking procedure. Usearch (Version 7.0.1090)<sup>19</sup> was, then, used to remove Chimeric sequences. Taxonomies were plotted against the gut Microbiome Database (HOMD RefSeq, Version 13.2) through the RDP classifier (Version 2.2)<sup>17</sup> and the Green-genes database (version 201305<sup>18</sup> 16S rDNA database, [http://qiime.org/home\\_static/dataFiles.html](http://qiime.org/home_static/dataFiles.html)) with a cut off of 70%. Alpha diversity indeces were measured in order to assess the intra-species variations within a given sample using Mothur (v1.31.2). Alpha diversity and rarefaction curve boxplots were constructed using software R (v3.1.1). To investigate the inter-species variations within samples, the beta diversity matrices were conducted and visualized using principal coordinate analysis (PCoA) by package ‘ade4’ of software R (v3.1.1). Also, heat maps were generated using the package ‘gplots’ of software R (v3.1.1), and, then, sequence alignments were searched against the Silva core set (Silva\_108\_core\_aligned\_seqs) by using PyNAST

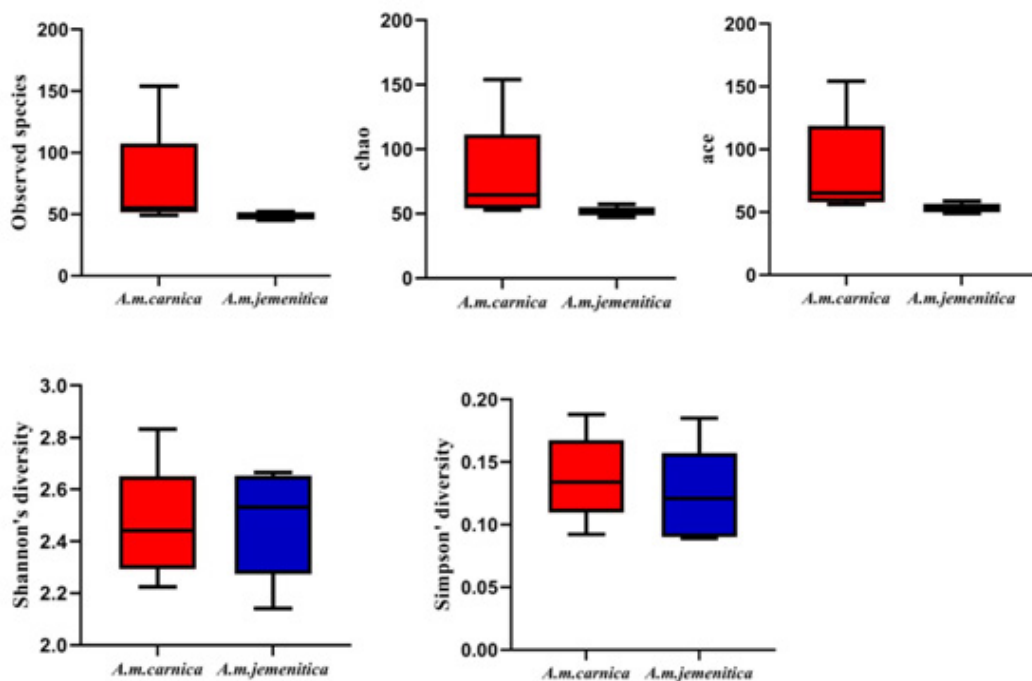
‘align\_seqs.py’. The obtained OTU phylogenetic tree was, then, plotted by software R (v3.1.1), and visualized through QIIME2 (v1.80).

Annotation of generated OTUs was done in order to detect the relative abundance at different taxonomical levels (phylum, genus and species). Finally, Metastats, PERMANOVA and Benjamini–Hochberg false discovery rate (FDR) correction were also used to correct for multiple hypothesis. The Linear Discriminant Analysis (LDA) Effect Size (LEfSe) was applied using software LEfSe with the online interface Galaxy (version 1.0.0; <http://huttenhower.sph.harvard.edu/galaxy/root>), to discriminate the two taxonomic races determining highly presented bacterial taxon within each race depending on statistical significance.

## RESULTS

### Statistics of 16S rRNA Sequence data

The five gut microbiome samples of *A.m. carnica* were identified as C1 to C5, while the five gut microbiome samples of *A.m. jemenitica* were identified as J1 to J5. Illumina MiSeq was used in sequencing the partial 16S rRNA gene



**Fig. 1.** Boxplots of alpha diversity indices illustrates richness and evenness at the group level of gut microbiomes of adult honeybee workers of *A.m. carnica* (red) and *A.m. jemenitica* (blue)

**Table 1.** Statistics of deep sequencing data generated for gut microbiomes of 10 adult honeybee workers from subspecies *A.m.carnica*(C1-C5) and *A.m.jemenitica* (J1-J5)

Sample ID	Reads length (bp)	Raw Data (Mbp)	N Base (%)	Low quality (%)	Clean Data (Mbp)	Data utilization (%)	Raw reads	Clean reads	Read utilization (%)
C1	300:300	157.62	0.035	3.863	143.01	90.73	262698 <sup>2</sup>	243471 <sup>2</sup>	92.68
C2	299:300	160.13	0.028	4.042	144.97	90.53	267327 <sup>2</sup>	247247 <sup>2</sup>	92.49
C3	298:300	145.38	0.024	4.128	131.32	90.33	243118 <sup>2</sup>	224437 <sup>2</sup>	92.32
C4	297:300	154.8	0.022	4.032	140.04	90.47	259289 <sup>2</sup>	239737 <sup>2</sup>	92.46
C5	296:300	90.52	0.025	4.629	80.83	89.29	151884 <sup>2</sup>	138813 <sup>2</sup>	91.39
J1	297:293	149.45	0.021	3.73	136.59	91.4	253305 <sup>2</sup>	235671 <sup>2</sup>	93.04
J2	296:293	162.1	0.026	3.963	147.33	90.89	275209 <sup>2</sup>	254716 <sup>2</sup>	92.55
J3	294:293	145.85	0.02	3.664	133.58	91.59	248468 <sup>2</sup>	231607 <sup>2</sup>	93.21
J4	293:293	135.37	0.021	3.797	123.52	91.25	231011 <sup>2</sup>	214843 <sup>2</sup>	93
J5	300:293	158.64	0.032	3.702	145.15	91.5	267523 <sup>2</sup>	248977 <sup>2</sup>	93.07

and statistics details are tabulated in Table 1. A total of 2,279,519 sequence reads were obtained with an average length of 297 bp across different samples ranging from 293 to 300 bp. The average clean reads per subject were 218,741 and 237,162 for *A.m. carnica* and *A.m. jemenitica* workers, respectively. A total of 2,269,665 tag-linked sequences were obtained across samples from both taxonomic groups with an average read of 236,125 and 217,807 per subject, for both *A.m. carnica* and *A.m. jemenitica* workers, respectively (Figure S1). Furthermore, a total of 601,485 tags were obtained across samples with an average reads of 63,313 and 56,983 per subject, in both *A.m. carnica* and *A.m. jemenitica* workers, respectively (Figure S1). The tagged sequences were assigned to a total of 171 OTUs across samples ranging from 45 (J3) to 154 (C5) OTUs (Table S1). The sum of OTUs in *A.m. carnica* (A.M.C) is 373 with an average number of 74 OTUs, while 241 in *A.m. jemenitica* (A.M.J) with an average number of 48 OTUs.

#### Alpha diversity and principle coordinate analyses and rarefaction curve measurement

Alpha diversity indices were used to analyse the complexity of the included species. These indices are observed species ( $S_{obs}$ ), Chao1, Ace, Shannon and Simpson. The  $S_{obs}$  and Chao1 indices indicated significance differences between A.M.C and A.M.J groups with higher diversity in A.M.C group. The P-values determined were 0.03175 for  $S_{obs}$  and 0.01587 for Chao1 indices (Figure 1 and Table 2). On the other hand, Shannon and Simpson indices revealed no significant difference between A.M.C and A.M.J groups. Chao1 and Shannon indices reflect the species diversity in terms of richness, while Simpson index is indicative of evenness<sup>20</sup>. The Simpson values in A.M.C and A.M.J groups were 0.1377 and 0.12313, respectively, while, Shannon index values were 2.4658 and 2.4769 in A.M.C and A.M.J groups, respectively (Figure 1 and Table 2).

Principal coordinate analysis (PCoA) was used to display the diversity as well as the differences in OTU composition. Diversity of A.M.C subjects was higher towards positive and negative PCA 1 directions (PC1), where as that of A.M.J subjects was higher towards positive and negative PCA 2 directions (PC2). As an overall picture, the diagram shows that the mean value of A.M.C group was localized in positive portion

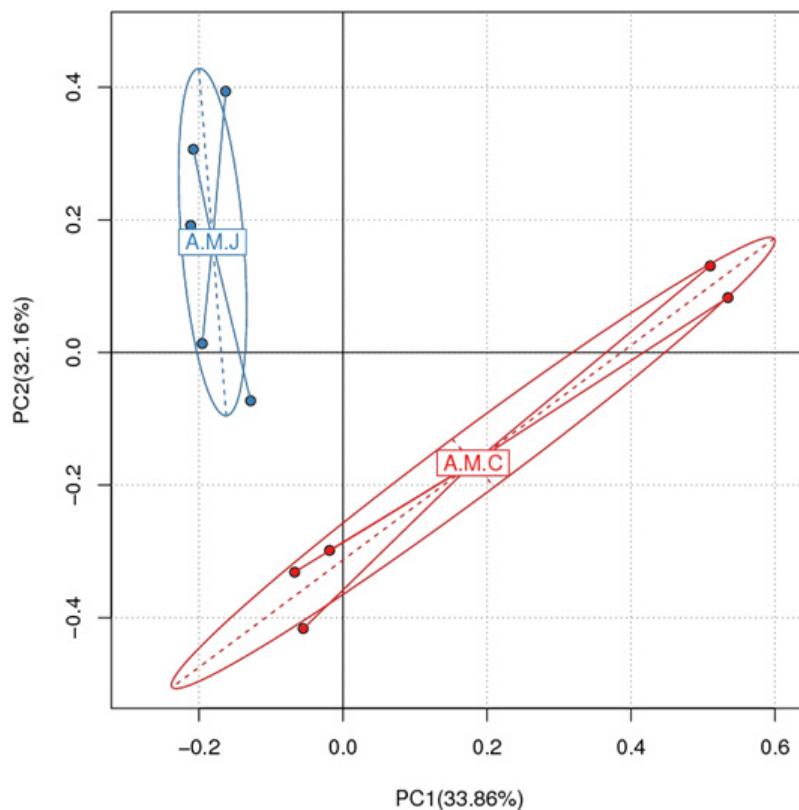
of PC1 and negative portion of PC2, whereas A.M.J group was mainly localized in the positive portion of PC2 (Figure 2). The principal coordinate analysis (PCoA) plots were created using a Bray-Curtis distance matrix and the samples were plotted to represent the microbial community compositional differences between samples. The plots are dimensionally scattered in accordance to their gut microbiome compositional relationships. The results of the present study indicate that the differences in gut microbiomes between these two groups are possibly due to the different origins of worker honeybees of the two subspecies.

The stacked number of OTUs and the number of observed species for different samples as rarefaction measures are shown in Figure S2. When the rarefaction curves inclines (Figure S2a) or stops climbing (Figure S2b), the produced data would be enough for further analysis. However, as long as the curve is still climbing, the complexity of the data in

samples become higher; since more species being detected throughout sequencing analysis. The two rarefaction curve measures refer to the maximum number of sequences attained for all samples that allows to study taxonomic relative abundance and to assess eligibility of such data to represent all species of any microbial community. The findings from both rarefaction measures show that 54,000 is the maximum number of sequence reads that can be used further in studying taxonomic abundance (Figure S2).

#### Structure of gut microbiomes across the two honeybee workers

Two taxonomic ranks (phylum and species) were used in the comparison of gut microbiomes between adult honeybee workers A.M.C and A.M.J at the phylogenetic level (Figure 3). The results indicate that phylum *Firmicutes* harbours 24 genera, while *Proteobacteria*, *Actinobacteria*, *Bacteroidetes* and *Thermi* harbour 23, 8, 6 and 2



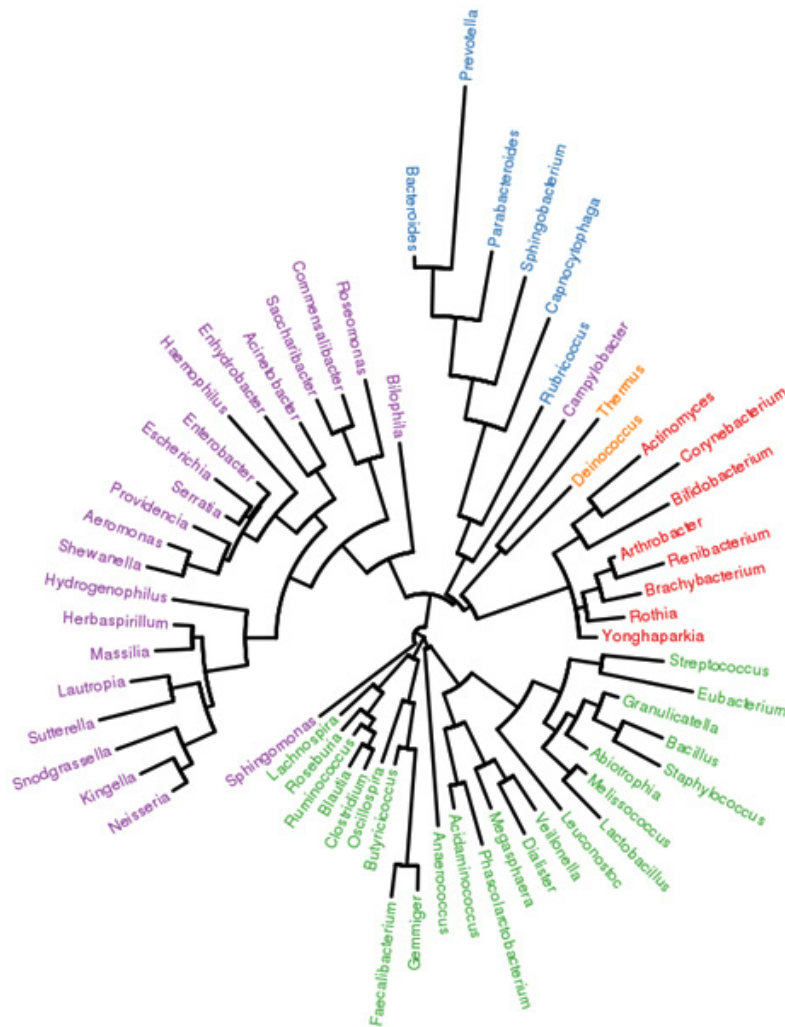
**Fig. 2.** PCoA based on OTU abundance of samples. Red boxes represent A.M.C (*A.m.carnica*) samples. Blue boxes represent A.M.J (*A.m.jemenitica*) samples. Each dot denotes one sample. X-axis is the first principal component and Y-axis is the second. Number in brackets denotes contributions of PCAs to differences among samples.

genera, respectively (Figure 3).

### Differential abundance of microbes due to different origin of worker

The observed microbial taxa along with their redundancies across different samples identified after OTU annotation are described in Table S2. The taxa refer to phylum, class, order, family, genus, and species. Eight phyla of the gut bacteria were identified according to relative abundance. They are Actinobacteria, Bacteroidetes, Cyanobacteria, Firmicutes, Protobacteria, TM7, Tenericutes and Thermi (Figure 4). Aligning with the number of genera of each phylum shown in Figure 3, the most abundant phylum were

Firmicutes (57%), Protobacteria (31%) and Actinobacteria (10%) in A.M.C group (Figure 4). Meanwhile, Firmicutes (48%), Protobacteria (44%) and Actinobacteria (6%) were the most abundant in A.M.J group (Figure 4). The comparison at phylum level revealed a significant increase in Cyanobacteria in the A.M.C group (P-value = 0.031746), while a significant increase of Protobacteria in the A.M.J group (P-value = 0.037724) (Table S3). Interestingly, Table S3 also indicates the existence of the three phyla TM7, Tenericutes and Thermi only in A.M.C group. The previous results align with those of the heat map at phylum level as Firmicutes, Protobacteria and



**Fig. 3.** Phylogenetic tree at genus level of gut microbiomes of adult honeybee workers of *A.m.carnica* and *A.m.jemenitica*. Genera having the same color belong to the same phylum

Actinobacteria were shown to be the most abundant phyla across samples and groups (Figure S3).

In terms of species relative abundance in the gut microbiomes of two groups A.M.C and A.M.J *Bacteroides fragilis*, *Bacteroides ovatus*, *Commensalibacter intestini*, *Blautia producta*, *Melissococcus plutonius*, *Ruminococcus gnavus*, *Saccharibacter floricola* and *Snodgrassella alvi* were shown to be the most abundant (Figure 5). The figure also indicates that a large proportion of the OTUs were not assigned to a certain species (93.80% for A.M.C and 86.20% for A.M.J). We have no explanation for these results except that a large number of species in workers of honeybee was not identified or classified before. The results in Table S4 indicates a significant increase of *Melissococcus plutonius* in the gut microbiome of A.M.C (P-value = 0.034454), while *Snodgrassella alvi* in the A.M.J group (P-value = 0.008948). Results for the

latter species *Snodgrassella alvi* align with that presented in Figure 5c. The *Ruminococcus gnavus* and *Saccharibacter floricola* were not existed in the A.M.J group. The heat map at species level indicates that *Snodgrassella alvi* harbours the highest relative abundance across all samples (Figures S4).

Linear discriminant analysis effect size (LEfSe) and its LDA scores ( $\tilde{A}^3$ ) were used to identify possible biomarkers in gut microbiota that refer to the origin of the host (Figure 6). The results in cladogram indicate that the possible marker in gut microbiome of A.M.C is Enterococcaceae family, while Neisseriaceae, Neisseriales and Betaproteobacteria taxa of A.M.J (Figure 6a). Biomarkers in A.M.C based on LDA score include Enterococcaceae, *Saccharibacter* sp., *Saccharibacter floricola*, Firmicutes (*Melissococcus* sp. and *Melissococcus plutonius*) and Cyanobacteria

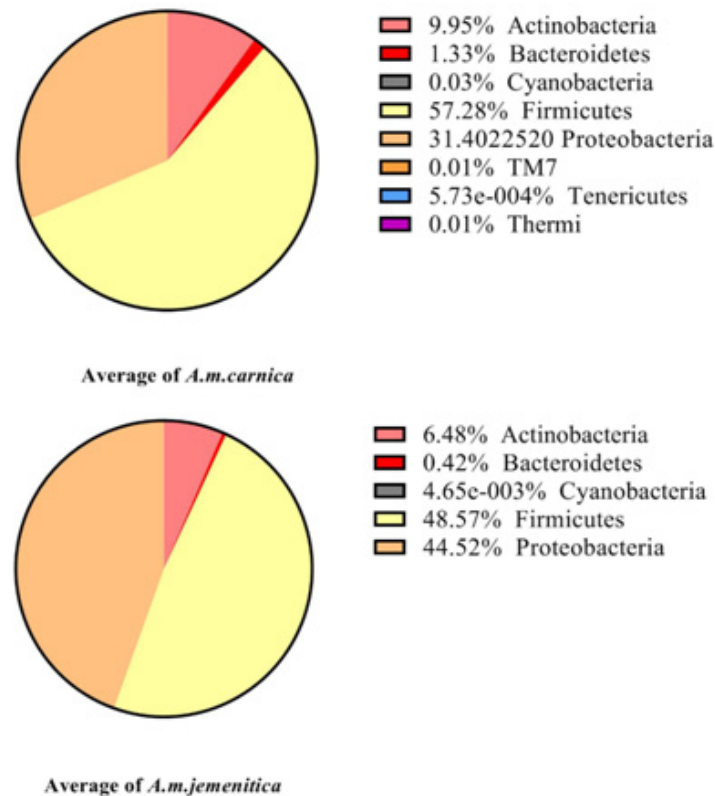
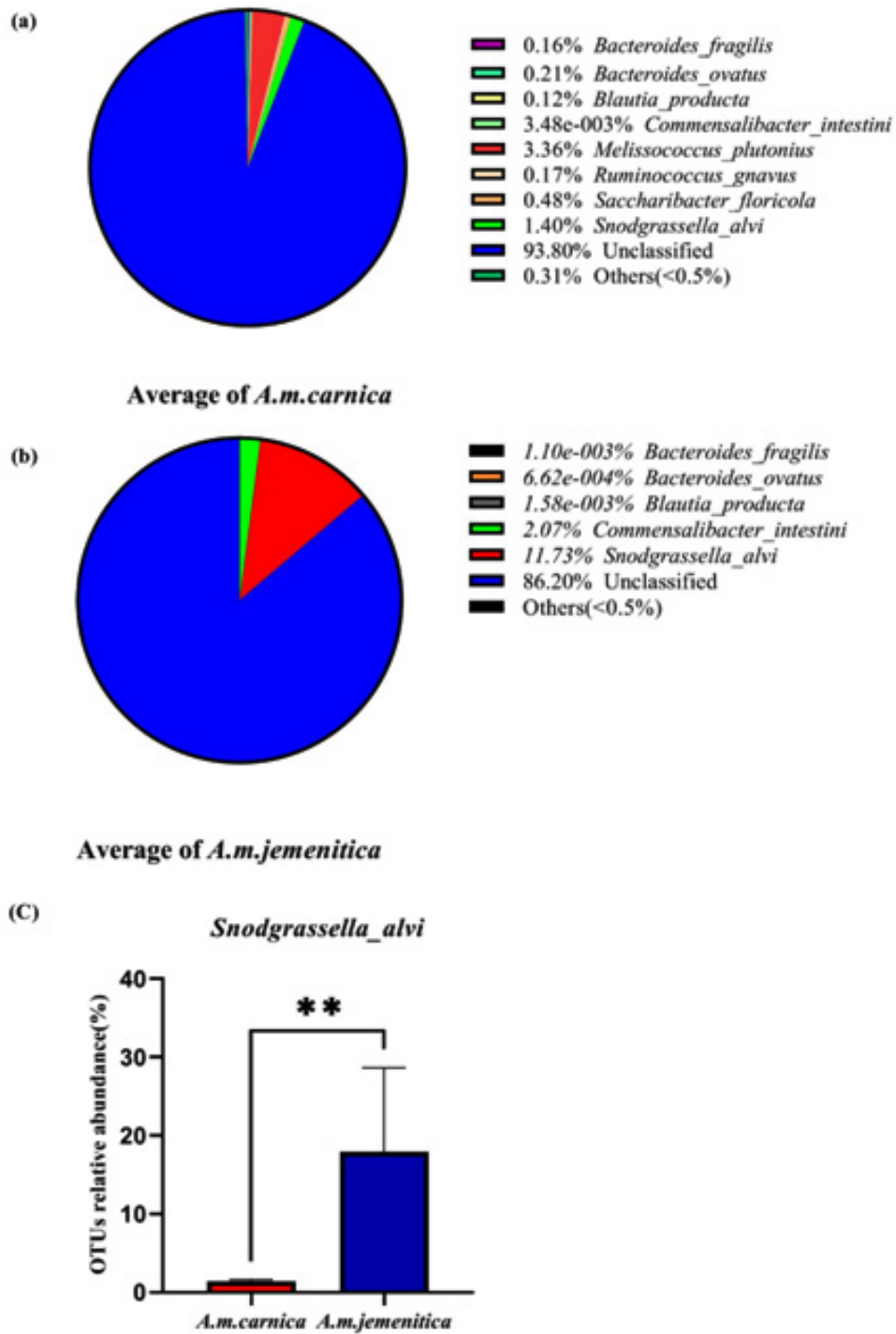


Fig. 4. Metastats measures for relative abundance of gut microbiomes at the phylum level for the group levels of *A.m.carnica* and *A.m.jemenitica*



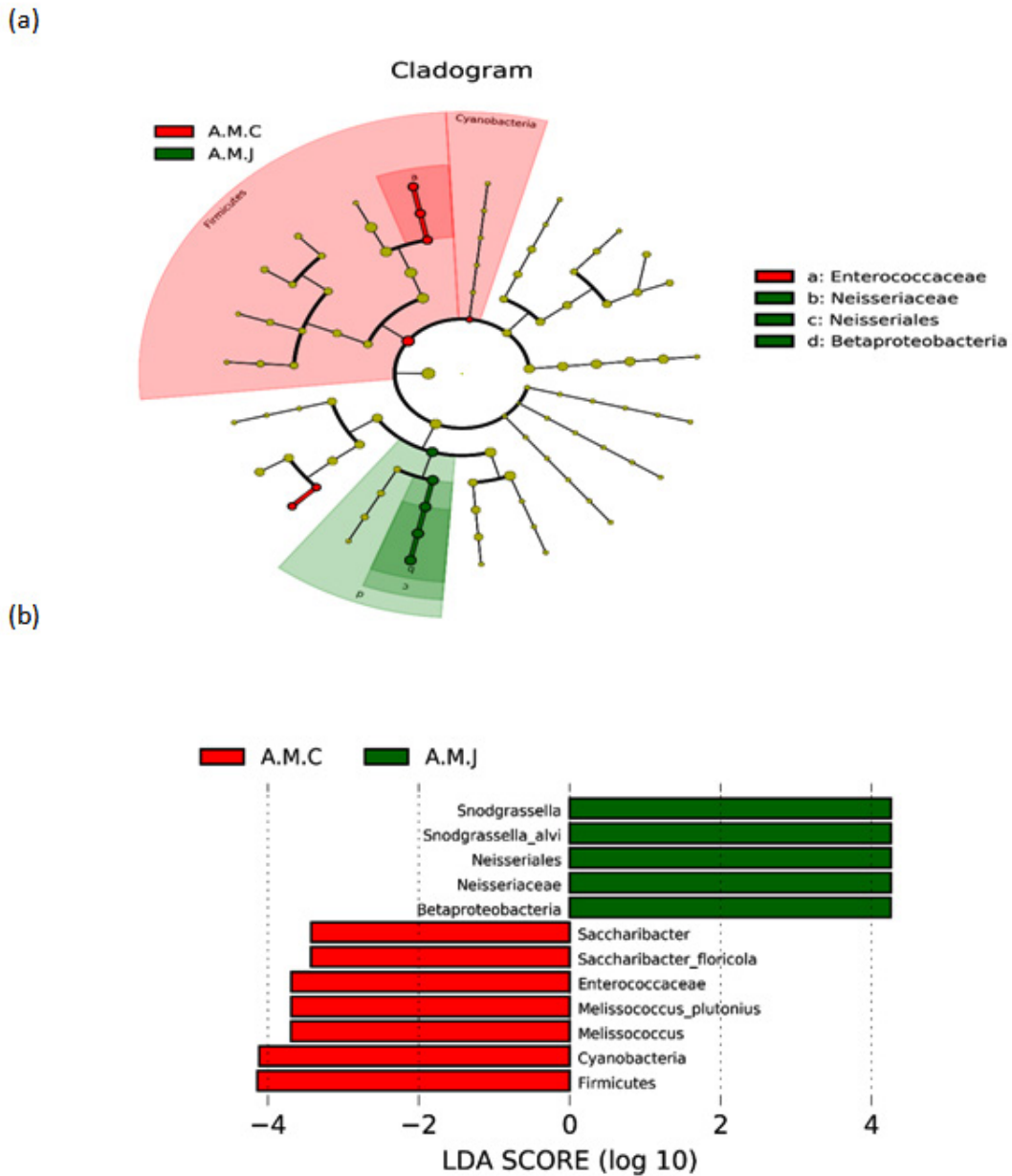
**Fig. 5.** Relative abundance of gut microbiomes of adult honeybee workers of *A.m.carnica* and *A.m.jemenitica* among (a and b, respectively) and across species (c) as measured by Metastats. \*\*High significant difference between microbiomes of *A.m.carnica* and *A.m.jemenitica*.



while Betaproteobacteria (Neisseriales, Neisseriaceae, *Snodgrassella* sp. and *Snodgrassella alvi*) in A.M.J (Figure 6b).

**DISCUSSION**

The gut microbiome structure of honeybee workers is dependent upon monophyletic origin of



**Fig. 6.** The main different bacterial taxa (biomarkers) for gut microbiomes of adult honeybee workers of A.m. carnica (A.M.C) and A.m. jemenitica (A.M.J). a) Cladogram-based LefSe analysis representing main different microbiota taxa between groups. b) taxa with LDA score > 3. Colour codes: Yellow (a) denotes no significant difference in taxa; Green denotes significantly different taxa (biomarkers) with their relative maximum abundance in (A.M.J); Red denotes significantly different taxa (biomarkers) with their relative maximum abundance in (A.M.C).

the host<sup>9</sup>, social interactions<sup>8</sup> and the type of diet consumed, whether workers are beebread, pollen or nectar<sup>1</sup>. In the present study, high-throughput sequencing was carried out for samples taken from the two honeybee subspecies *A.m. carnica* and *A.m. jemenitica* and statistical analysis proved that the diversity of the bacterial community composition of *A.m. carnica* and *A.m. jemenitica* was statistically significant.

Four major bacterial phyla (Firmicutes, Proteobacteria, Actinobacteria and Bacteroidetes) were recognized in the guts of honeybee workers of the two subspecies *A.m. carnica* and *A.m. jemenitica*. The dominant phylum in gut microbiomes of the two subspecies was Firmicutes with values of 57.2 and 48.5%, respectively. This conclusion was also drawn in several previous reports<sup>9,21,22,23</sup>. Genus *Lactobacillus*, gram-positive bacteria belonging to the family *Lactobacillaceae* (Firmicutes), was found to have a high relative abundance in adult workers of both *A.m. carnica* and *A.m. jemenitica* with values of 52% and 80%, respectively. It is a core gut bacterium that is dominant in the rectum of honeybee workers. Within this context, Ahnet *al.*<sup>24</sup> concluded that *Lactobacillaceae* dominates in both of *A. cerana* and *A. mellifera* species. This genus produces several compounds in honeybee gut with known antimicrobial activities such as organic acids, hydrogen peroxide, bacteriocin, reutericyclin and reuterin that mostly inhibit decaying and protects against pathogenic bacteria, as well as some fungi<sup>25,26</sup>. Therefore, Honeybees likely use lactobacilli as probiotic<sup>27</sup>. In the present study, the dominance of *Lactobacilli* in both *A.m. carnica* and *A.m. jemenitica* adult workers is supported by the presence of low pH (3.9) of honey and nectar<sup>28</sup>. This is concluded because of the ability of lactobacilli to ferment sugar in the gut of honeybee workers

and, hence, to generate acidic environment<sup>29</sup>, which inhibits the growth of many other bacteria. The low abundance in *Lactobacillaceae* was reported to be associated with the presence of pathogenic bacteria<sup>30</sup>.

Genus *Bifidobacterium*, gram-positive bacteria belonging to the Actinobacteria phylum, was also identified in gut of both *A.m. carnica* and *A.m. jemenitica* adult workers. Again, it is dominant in rectum, and a core gut bacteria of honeybee workers. *Bifidobacterium* strains carry large surface proteins, which have a role in adhesion or degradation of plant materials<sup>7,31,32</sup>. Additionally, *Bifidobacterium* carries gene clusters that are responsible for the production and utilization of trehalose, which is a disaccharide molecule used by insects as an energy reservoir, in comparison to glycogen, which is the energy storage form in mammals<sup>33</sup>.

Family Neisseriaceae and its descendent *Snodgrassella alvi* (*S. alvi*), gram-negative bacteria belonging to Betaproteo bacteria phylum, significantly increased in *A.m. jemenitica*. These bacteria participate in oxidation of carbohydrates. However, the pathway for the uptake and glycolytic breakdown of carbohydrates does not exist in *S. alvi*, thus, this bacterium is located consistently within the periphery of the insect's gut lumen. This area has high oxygen concentrations and this environment is preferable for *S. alvi* due to its dependence on aerobic respiration<sup>34,35</sup>. Insects depend on the aerobic oxidation of carboxylates rather than breaking down carbohydrates resulting in various products such as citrate, malate, acetate and lactic acid that serve as energy sources<sup>12,27</sup>. The steady co-exists of *S. alvi* with other fermentative bacterial taxa in the same gastrointestinal environment can result from utilizing separate sets of resources

**Table 2.** Alpha diversity comparison results among groups of gut microbiomes of honeybee workers from subspecies *A.m. carnica* (A.M.C) and *A.m. jemenitica* (A.M.J)

Alpha diversity measure	Mean (A.M.C)	SD (A.M.C)	Mean (A.M.J)	SD (A.M.J)	p-value
S <sub>obs</sub>	74.6	44.59036	48.2	3.11448	0.03175
Chao	79.1	42.37209	52.01667	3.76128	0.05556
Ace	83.69118	40.78638	53.23999	3.78296	0.01587
Shannon	2.4658	0.22593	2.4769	0.21404	0.84127
Simpson	0.1377	0.0347	0.12313	0.0389	0.30952

leading to metabolic variations suggesting a syntrophic interaction. For example, *S. alvica* utilize some of the substrates such as lactic acid, acetate and formate, which are produced from carbohydrate fermentation<sup>36,37</sup>. Furthermore, *S. alvi* and *G. apicola*<sup>38</sup> are enriched with genes encoding biofilm formation. The two species inhabit the host's ileum, indicating that the biofilm can provide a protective layer against pathogens.

The bacteria of the family Acetobacteraceae and its descendent genus *Commensalibacter* (also referred to as Alpha 2.1), gram-negative bacteria belonging to phylum Proteobacteria, were identified as a core member of the gut microbiota in honeybees and bumble bees<sup>9,31</sup>. It was observed mainly in the midgut and hindgut of honeybee workers. In our study, *Commensalibacter* presents in *A.m. carnica* and *A.m. jemenitica*. However, *Saccharibacterflorica* (Alpha-2.2) presents only in *A.m. carnica*. Furthermore, *Saccharibacterflorica* is isolated from pollen, suggesting that this phylotype is associated with flowers<sup>39</sup>. The role of these phylotypes (Alpha 2.1 and Alpha-2.2) is associated with their abilities to adapt with fast growing metabolic processes, with two distinctive mechanisms. Alpha2.1 bacteria harvest energy through a wide range of substrates linked and utilized through a flexible oxidative and biosynthetic metabolism. Whereas, Alpha2.2 bacteria, that lack alternative oxidative pathways, determine metabolic processes through oxidative fermentation after harvesting glucose for rapid energy<sup>40</sup>.

The bacteria of the family *Enterococcaceae* and its descendent species *Melissococcus plutonius*, gram-positive bacteria of phylum Firmicutes, present in low abundance (3%) in gut microbiome of *A.m. carnica* honeybee workers. This conclusion was also noted in previous reports<sup>41</sup>. *M. plutonius* is known to cause the European foulbrood (EFB) in early stage of honeybee larvae, with assistance from secondary invaders (*Enterococcus faecalis*, *Paenibacillus alvei* and *Bacillus pumilus*). *M. plutonius* was shown to have 30 different sequence types clustered under three clonal complexes (CC 3, CC12, and CC13)<sup>42,44</sup>, where CC13 is the least virulent complex<sup>43,45</sup>. Honeybee workers transmit *M. plutonius* between colonies via robbing and

drifting<sup>46,47</sup>. Erban *et al.*<sup>45</sup> compared control samples from the EFB zone with samples from EFB zone without clinical symptoms, and bees from colonies from EFB zone with clinical symptoms. The study identified a 100-fold higher prevalence of *M. plutonius* in colonies with EFB symptoms, while it only presents in 3 of 16 control colonies that are distant from the EFB zone. This suggests that *M. plutonius* has lower abundance in healthy honeybee colonies, which is consistent with the results of the present study.

## CONCLUSION

The present findings indicative that differences in gut microbiome structures of honeybee workers of the two subspecies *A.m. carnica* and *A.m. jemenitica* are due to varied monophyletic origin of the host. These findings support previous results suggesting that honeybee workers have a mutual coevolving relationship with specific group of bacteria. This group of bacteria co-exists and is maintained throughout the descending generations of the host. Inclusion of more subspecies inhabited in Saudi Arabia along with ones of this study can further support our findings.

## ACKNOWLEDGEMENTS

This study was supported by Beekeeper Cooperative Association-Al Baha. The authors would like to thank Prof. Dr. Ahmad Al-Ghamdi, Dept. Plant Protection, College of Food and Agricultural Sciences, KSU, Riyadh, for his support and cooperation during this study.

### Data availability

The data have been deposited in the National Center for Biotechnology Information (NCBI) Sequence Reads Archive (SRA) under Bio Project ID: PRJNA675634 (<https://dataview.ncbi.nlm.nih.gov/object/PRJNA675634>)

### Conflict of Interest

The authors declare no conflict of interest.

### Supplementary Information

Supplementary information accompanies this article at <http://dx.doi.org/10.13005/bbra/2870>  
Additional file: Additional Table S1, S2, S3 and S4 Additional Figure S1 to S4

## REFERENCES

1. Powell, J. E., Martinson, V. G., Urban-Mead, K. & Moran, N. A. Routes of acquisition of the gut microbiota of the honeybee *Apis mellifera*. *Appl. Environ. Microbiol.*, 2014; **80**, 7378–7387.
2. Jones, J. C. *et al.* Gut microbiota composition is associated with environmental landscape in honeybees. *Ecology and evolution*, 2018; **8**, 441–451.
3. Engel, P. & Moran, N. A. The gut microbiota of insects—diversity in structure and function. *FEMS microbiology reviews*, 2013; **37**: 699–735.
4. Krishnan, M. *et al.* Insect gut microbiome—An unexploited reserve for biotechnological application. *Asian Pacific journal of tropical biomedicine*, 2014; **4**: S16–S21.
5. Martinson, V. G., Moy, J. & Moran, N. A. Establishment of characteristic gut bacteria during development of the honeybee worker. *Appl. Environ. Microbiol.* 2012; **78**, 2830–2840.
6. Moran, N. A. Genomics of the honeybee microbiome. *Current opinion in insect science*, 2015; **10**: 22–28.
7. Jones, J. C. *et al.* The gut microbiome is associated with behavioural task in honeybees. *Insectes sociaux*, 2018; **65**, 419–429.
8. Kapheim, K. M. *et al.* Caste-specific differences in hindgut microbial communities of honeybees (*Apis mellifera*). *PloS one*, 2015; **10**: e0123911.
9. Martinson, V. G. *et al.* A simple and distinctive microbiota associated with honeybees and bumble bees. *Molecular Ecology*, 2011; **20**: 619–628.
10. Kešnerová, L., Moritz, R. & Engel, P. *Bartonella apis* sp. nov., a honeybee gut symbiont of the class Alphaproteobacteria. *International journal of systematic and evolutionary microbiology*, 2016; **66**: 414–421.
11. Corby-Harris, V. *et al.* Origin and Effect of Alpha 2.2 Acetobacteraceae in Honeybee Larvae and Description of *Parasaccharibacter apium* gen. nov., sp. nov. *Appl. Environ. Microbiol.*, 2014; **80**: 7460–7472.
12. Kwong, W. K. & Moran, N. A. Cultivation and characterization of the gut symbionts of honeybees and bumble bees: description of *Snodgrassella alvi* gen. nov., sp. nov., a member of the family Neisseriaceae of the Betaproteobacteria, and *Gilliamella apicola* gen. nov., sp. nov., a memb. *International journal of systematic and evolutionary microbiology*, 2013; **63**: 2008–2018.
13. Bottacini, F. *et al.* *Bifidobacterium asteroides* PRL2011 genome analysis reveals clues for colonization of the insect gut. *PLoS One*, 2012; **7**: e44229.
14. Olofsson, T. C., Alsterfjord, M., Nilson, B., Butler, È. & Vásquez, A. *Lactobacillus apinorum* sp. nov., *Lactobacillus mellifer* sp. nov., *Lactobacillus mellis* sp. nov., *Lactobacillus melliventris* sp. nov., *Lactobacillus kimbladii* sp. nov., *Lactobacillus helsingborgensis* sp. nov. and *Lactobacillus kullabergensis* sp. nov., isol. *International journal of systematic and evolutionary microbiology*, 2014; **64**, 3109.
15. Engel, P., Kwong, W. K. & Moran, N. A. *Frischellaperrara* gen. nov., sp. nov., a gammaproteobacterium isolated from the gut of the honeybee, *Apis mellifera*. *International journal of systematic and evolutionary microbiology*, 2013; **63**: 3646–3651.
16. Zhu, X., Wang, J., Reyes-Gibby, C. & Shete, S. Processing and Analyzing Human Microbiome Data. in *Statistical Human Genetics* 649–677 (Springer, 2017).
17. Cole, J. R. *et al.* Ribosomal Database Project: data and tools for high throughput rRNA analysis. *Nucleic acids research*, 2014; **42**, D633–D642.
18. DeSantis, T. Z. *et al.* Greengenes, a chimera-checked 16S rRNA gene database and workbench compatible with ARB. *Applied and environmental microbiology*, 2006; **72**: 5069–5072.
19. Edgar, R. C. UPARSE: highly accurate OTU sequences from microbial amplicon reads. *Nature methods*, 2013; **10**: 996–998.
20. Lombogia, C. A., Tulung, M., Posangi, J. & Tallei, T. E. Bacterial Composition, Community Structure, and Diversity in *Apis nigrocincta* Gut. *International Journal of Microbiology*, 2020; **2020**.
21. Jeyaprakash, A., Hoy, M. A. & Allsopp, M. H. Bacterial diversity in worker adults of *Apis mellifera capensis* and *Apis mellifera scutellata* (Insecta: Hymenoptera) assessed using 16S rRNA sequences. *Journal of invertebrate pathology*, 2003; **84**: 96–103.
22. Mohr, K. I. & Tebbe, C. C. Diversity and phylotype consistency of bacteria in the guts of three bee species (Apoidea) at an oilseed rape field. *Environmental Microbiology*, 2006; **8**: 258–272.
23. Yoshiyama, M. & Kimura, K. Bacteria in the gut of Japanese honeybee, *Apis cerana japonica*, and their antagonistic effect against *Paenibacillus* larvae, the causal agent of American foulbrood. *Journal of Invertebrate Pathology*, 2009; **102**: 91–96.
24. Ahn, J.-H. *et al.* Pyrosequencing analysis of the bacterial communities in the guts of honeybees *Apis cerana* and *Apis mellifera* in Korea. *Journal of Microbiology*, 2012; **50**: 735–745.

25. Lahtinen, S., Ouwehand, A. C., Salminen, S. & von Wright, A. *Lactic acid bacteria: microbiological and functional aspects*. (Crc Press, 2011).
26. Mokoena, M. P. Lactic acid bacteria and their bacteriocins: classification, biosynthesis and applications against uropathogens: a mini-review. *Molecules*, 2017; **22**: 1255.
27. Kwong, W. K., Mancenido, A. L. & Moran, N. A. Genome sequences of *Lactobacillus* sp. strains wkB8 and wkB10, members of the Firm-5 clade, from honeybee guts. *Genome Announc.*, 2014; **2**: e01176-14.
28. JA, S. Cliver DO. Microorganisms in honey. *Int. J. Food Microbiol.*, 1996; **31**: 1–26.
29. Bignell, D. E. & Heath, L. A. F. Electropositive redox state of the fifth-instar larval gut of *Apis mellifera*. *Journal of apicultural research*, 1985; **24**, 211–213.
30. Koch, H. & Schmid-Hempel, P. Socially transmitted gut microbiota protect bumble bees against an intestinal parasite. *Proceedings of the National Academy of Sciences*, 2011; **108**, 19288–19292.
31. Kwong, W. K. & Moran, N. A. Gut microbial communities of social bees. *Nature Reviews Microbiology*, 2016; **14**: 374–384.
32. Bonilla-Rosso, G. & Engel, P. Functional roles and metabolic niches in the honeybee gut microbiota. *Current opinion in microbiology*, 2018; **43**: 69–76.
33. Alatawy, M. *et al.* Gut Microbial Communities of Adult Honeybee Workers (*Apis Mellifera*). *Biosciences Biotechnology Research Asia*, 2020; **17**:
34. Brune, A. Symbiotic digestion of lignocellulose in termite guts. *Nature Reviews Microbiology*, 2014; **12**, 168.
35. Ebert, M. *et al.* Structure and topology of microbial communities in the major gut compartments of *Melolontha melolontha* larvae (Coleoptera: Scarabaeidae). *Appl. Environ. Microbiol* 2005; **71**, 4556–4566.
36. Anderson, K. E. *et al.* Hive stored pollen of honeybees: many lines of evidence are consistent with pollen preservation, not nutrient conversion. *Molecular ecology*, 2014; **23**: 5904–5917.
37. Corby-Harris, V., Maes, P. & Anderson, K. E. The bacterial communities associated with honeybee (*Apis mellifera*) foragers. *PloS one*, 2014; **9**, e95056.
38. Engel, P., Martinson, V. G. & Moran, N. A. Functional diversity within the simple gut microbiota of the honeybee. *Proceedings of the National Academy of Sciences*, 2012; **109**: 11002–11007.
39. Jojima, Y. *et al.* *Saccharibacter floricola* gen. nov., sp. nov., a novel osmophilic acetic acid bacterium isolated from pollen. *International Journal of Systematic and Evolutionary Microbiology*, 2004; **54**, 2263–2267.
40. Bonilla-Rosso, G. *et al.* Acetobacteraceae in the honeybee gut comprise two distant clades with diverging metabolism and ecological niches. *bioRxiv*, 2019; 861260.
41. Sopko, B. *et al.* Detection and quantification of *Melissococcus plutonius* in honeybee workers exposed to European foulbrood in Czechia through conventional PCR, qPCR, and barcode sequencing. *Journal of Apicultural Research* 1–12 (2019).
42. Budge, G. E. *et al.* The occurrence of *Melissococcus plutonius* in healthy colonies of *Apis mellifera* and the efficacy of European foulbrood control measures. *Journal of invertebrate pathology*, 2010; **105**, 164–170.
43. Budge, G. E. *et al.* Molecular epidemiology and population structure of the honeybee brood pathogen *Melissococcus plutonius*. *The ISME journal*, 2014; **8**: 1588–1597.
44. Takamatsu, D. *et al.* Typing of *Melissococcus plutonius* isolated from European and Japanese honeybees suggests spread of sequence types across borders and between different *Apis* species. *Veterinary microbiology*, 2014; **171**, 221–226.
45. Erban, T. *et al.* European foulbrood in Czechia after 40 years: application of next-generation sequencing to analyze *Melissococcus plutonius* transmission and influence on the bacteriome of *Apis mellifera*. *PeerJ Preprints*, 2017; **4**: e2618v1.
46. Hunt, M. G. *Index to Department Bulletins*. (US Government Printing Office, 1936).
47. Belloy, L. *et al.* Spatial distribution of *Melissococcus plutonius* in adult honeybees collected from apiaries and colonies with and without symptoms of European foulbrood. *Apidologie*, 2007; **38**, 136–140.