

## Adsorption of Azo Dyes Using Biochar Prepared from Regional Crop Waste Material

Shridhar K. Jadhav\* and Sanjaykumar R. Thorat

School of Environmental and Earth Sciences, Kavayitri Bahinabai Chaudhari North Maharashtra University, Jalgaon 425001, Maharashtra, India.

<http://dx.doi.org/10.13005/bbra/2973>

(Received: 08 February 2022; accepted: 23 March 2022)

Adsorption of dyes and a colorant using biochar is an emerging technology with environment-friendly and cost-effective applications. In this study, we investigated the adsorption isotherms of Brilliant Blue (BB) and Congo Red (RR) using Biochars prepared from regional plant waste of the *Musa acuminata* stem at 4500C (BSB 450). A batch experiment study for BB and CR with its initial concentration (1-240 mg/l) contact time (30–240 min) pH (3-10) and dose range (25-450 mg/l) at temperature 303K was carried out. The experimental data follows the Freundlich isotherm for BB and Langmuir isotherm for CR. As per our results adsorption isotherm equilibrium data shows the highest adsorption of BB onto BSB 450 is 175.57 mg/g and CR is 135.15 mg/g in Dubinin–Radushkevich model. The study also shows that BSB 450 is a cost-effective and environment-friendly adsorbent that was used for the treatment of dyes containing effluents like a tannery, textile, and dye waste producing industries.

**Keywords:** Adsorption Isotherm; Brilliant blue; Biochar; Azo dyes; *Musa acuminata*; Congo red.

Effluents containing Dyes from textile, tannery, printing, and paper industry it is environmentally toxic, and considering major water body pollution worldwide; they exhibit adverse effects on humans, organisms, and nature. For colorant contained wastewater before its discharge on water bodies, it requires to give proper treatment. For wastewater treatment now various physical, biological, chemical treatments are available but adsorption is most preferable and usable<sup>1</sup>. The key pollutants in effluent from industry can significantly fluctuate and are usually categorized by excessive amounts of constant substances, for example, organics, dyes, toxicants,

surfactants, inhibitory compounds, chlorinated compounds, salts, and heavy metals, in addition to coloured dyes are the extremely challenging components of the wastewater<sup>5,8,20</sup>. In the traditional industrial treatment of effluent, common ways applied are physical, coagulation, chemical precipitation, biological treatment, electrochemical destruction, flotation, etc<sup>5,20</sup>. In the leather tanning process, a huge amount of highly toxic azo dyes, chemicals such as chrome salts, vegetable, and synthetic tannins, phenolic compounds, surface-active compounds, pesticides, and sulfonated oils, are being used to convert the rawhide/skins into commercial leather or leather products<sup>7,15</sup>. Effluents

\*Corresponding author E-mail: profskjadhav@gmail.com



from the printing, textile, cosmetics, dyeing, food colouring, and papermaking industries are containing huge amounts of dyes. This coloured wastewater when mixed with groundwater and surface water system, will be creating serious effects on human health and the environment<sup>12,13,19</sup>. Dyes containing wastewater mainly resulting allergic diseases, irritation, cancer, and mutation<sup>13</sup>. Last few years, several tools have been developed and used for the elimination of the dye pollutants from industrial wastewater: including adsorption, coagulation/flocculation, enhanced oxidation practices, ozonation, membrane purification, and biological treatment<sup>5,18,18</sup>.

Wastewater treatment in a developing country is an economic and sustainable challenge<sup>6</sup> because of the feasibility and cost of treatment, due to these, it requires low-cost and less complicated techniques. In the last decade, millions of researchers have been working on an environmentally friendly and cost-effective technology suitable for the industry. In this study, we are concerned with the adsorption technique with biochar produced from the agricultural wastes of *Musa acuminata* stem. *Musa acuminata* is native to the hot, tropical regions of Southeast Asia and is also common in Brazil, China, India, Ecuador, Colombia, and Venezuela<sup>10,16,17</sup>. Adsorption of pollutants from the effluent is one of the best-fitted and cost-effective as well as eco-friendly techniques for wastewater and dyes removal. In tannery effluent mainly the concentration of dyes is much high, so we are applying the adsorption technique for dyes adsorption by using natural adsorbent Biochar prepared from regional plant waste material.

## MATERIAL AND METHODS

The material used in the present study is azo dyes Congo red (CR) (molecular weight is 696.665g/mol and formula- $C_{32}H_{22}N_6Na_2O_6S_2$ ) and Brilliant Blue (BB) (molecular weight 792.85g/mol and formula-  $C_{37}H_{34}N_2Na_2O_9S_3$ ). The used BB and CR solutions for this study were prepared from the stock solutions of 1000 mg/L. The additional chemicals were used in the research were also analytical grade and purchased from Merck. The *Musa acuminata* stem was collected from the

farm near the Kavayitri Bahinabai Chaudhari North Maharashtra university campus Jalgaon, Maharashtra.

### Preparation of Biochar

The air-dried fresh *Musa acuminata* stems are collected from the farm near the Kavayitri Bahinabai Chaudhari North Maharashtra University campus in the Jalgaon district Maharashtra. Collected *Musa acuminata* plant stem biomass was washed with distilled water for the elimination of dirt and unwanted particles; then air-dried for 24 hours after that it dried in a vacuum oven for 1 hour at 450°C temperature. oven-dried biomass cut into small pieces, then wrapped with aluminium foil perfectly. In wrapped foil a fine small pin-sized hole was drilled for oxygen presence. Finally, this biomass was placed in a muffle furnace (Lab Star make in India CAT No-LSI 031) Ramp set at 5°C for 450°C temperature for 6 hrs. at atmospheric pressure. The biomass was grind in the mixer and sieved to its powdered material at <250µ particle size. The prepared biochar of *Musa acuminata* stem was named BSB-450 and used for the batch adsorption study.

### Batch experiment for adsorption of azo dyes

The adsorption trials of the azo dyes namely Congo red (CR) and brilliant blue (BB) have been assessed in the batch method in the 100 mL flask. The control studies were conducted with 20 mg/L of 25 mL volume of both BB and CR dyes with the addition of 25 to 450mg/L adsorbent at pH 3.0. Moreover, these BB+BSB-450 and CR+BSB-450 mixture was shaken thoroughly by using an orbital shaker (Steelmet Novatech Model Table-Top) at 150 rpm for 1hr. The mixture of both BB+BSB-450 and CR+BSB-450 was then filtered through a Whatman's filter paper which size is 42µ and the filtered solutions were used to evaluate the removal capacity of BSB-450. Analyzing the concentration of BB and CR was done by taking an absorption using UV-spectroscopy (SL-159, Elico, India). Batch study we used the concentration range of BB and CR is (1-260 mg/L), pH of BB and CR (3-10), and Dose of BSB-450 (25-450 mg/L). to estimate the highest removal efficiency of BSB 450 laboratory conditions.

### Characterisation of BSB 450

Physical and chemical characteristic of *Musa acuminata* stem biochar (BSB 450) analysed

in the laboratory showing the following results presented in table no-1. Yield of the Biochar calculated by:

$$yeild \% = \frac{\text{Mass of biochar(final Product) (g)}}{\text{Oven dry mass of feedstock(g)}} \times 100$$

The pH is measured using a pH meter (elico model LI 120). The pH meter is calibrated with buffer solutions pH 4, pH 7 and pH 9. The prepared BSD 450 is dissolved in double distilled water (distilled water of MILLI-Q model Direct 8 from Millipore) and shaken with a shaker at 150 rpm for 1 hour. The pH of BSB450 major by the standard procedure it Shows pH 8.61.

Electrical conductivity is measured using a digital conductivity meter (Elico model no- CM 180). The conductometer is calibrated with a 0.1NKCL solution. Prepared BSB450 is added to double distilled water and shaken in shaker at 150 rpm for 1 hour. Then the electrical conductivity is measured according to the standard procedure, which is 42.26 mS/cm. Table No. 1. In the adsorption study, the surface area of the adsorbent plays an important role in the analysis of BSB 450 by field emission scanning electron microscopy (FESEM, S-4800, Hitachi, USA). The surface of BSB 450 is soft and has a porous structure, which is helpful for the adsorption of pollutants or dyes. The after image of BSB 450 shows a coarse surface with adsorbed dye folds and some pores. Consequently, the FESEM image shows the above-mentioned changes, resulting in a strong affinity of biochar for the adsorption of azo dyes.

## RESULT AND DISCUSSION

### pH study

Brilliant blue dyes and Congo red adsorption study carried at the range of pH 3-10 in these mainly the adsorption pattern shows the higher adsorption at pH 3 means at the high acidic condition the prepared biochar work much more effectively. BB adsorption at pH 3 is 98.52 percent after pH 3 it is continuously decreasing from pH 4 to 10 it shown in figure 2.

Adsorption of Congo red dyes at the pH range 3 to 10 shows the continuous decreasing order from pH 3 to 10. Maximum dyes removal on BSB 450 is at pH 3 it is 91.16 percent after pH 3 up to pH 10 it continuously decreases at pH 10 the removal percent is only 61.48. the maximum

adsorption capacity of BSB 450 is at pH 3 so in all further studies, we use a pH range is 3.

### Dose Study

In this batch study the adsorption of BB dyes on BSB 450 in the range of 25 mg to 225 mg at an interval of 25 mg dose. The batch experiment shows the highest result of adsorption or a dyes removal at 25mg after that the increases dose level from 25 mg to 225 mg its removal capacity continuously decreases the highest removal percent is 89.20 percent at 25 mg it shown in figure no 3.

Adsorption of CR dyes onto the BSB 450 batch experiment we used the dose in the range of 50mg to 450mg interval up to the 50mg to obtain data from the experiment showing the higher adsorption at 50mg is 76.67 percent dose after the increasing dose from 50mg to 450 its decreases so further study we use 50mg dose of BSB 450.

### Time Study

In the Adsorption study contact time required is most important for the removal or adsorption. In these batch experiments, we use the time interval of 30 minutes for each in the set-up time from 30 minutes to 240 minutes time interval study the results obtained is the maximum adsorption at a time 60 minutes means a one hour. The obtained data in figure no 4 shows at 1 hour 98.95 percent adsorption of BB on BSB450.

Time study of CR on BSB 450 is showing the removal of the maximum dye at the range of 60 minutes. We study the time interval of 30 minutes from 30 minutes to 270 minutes variation to obtain

**Table 1.** Physical and chemical characteristics of the Banana stem biochar (BSB)

Samples	BSB-450
Yield (%)	39.49%
Ash (%)	47.17%
Volatile Matter (%)	4.64%
Fixed Carbon (%)	48.19%
pH in ultrapure water (1:5 w/w)	8.61
Electrical Conductivity (EC)	48.26mS/cm
Cation Exchange Capacity (CEC)	132.7cmol·kg <sup>-1</sup>
Organic carbon (%)	19.98%
Organic Matter (%)	34.44%
Metals in extract	
Sodium (Na)	205ppm
Potassium (K)	2551ppm
Calcium (Ca)	160.32ppm
Magnesium (Mg)	729.6ppm

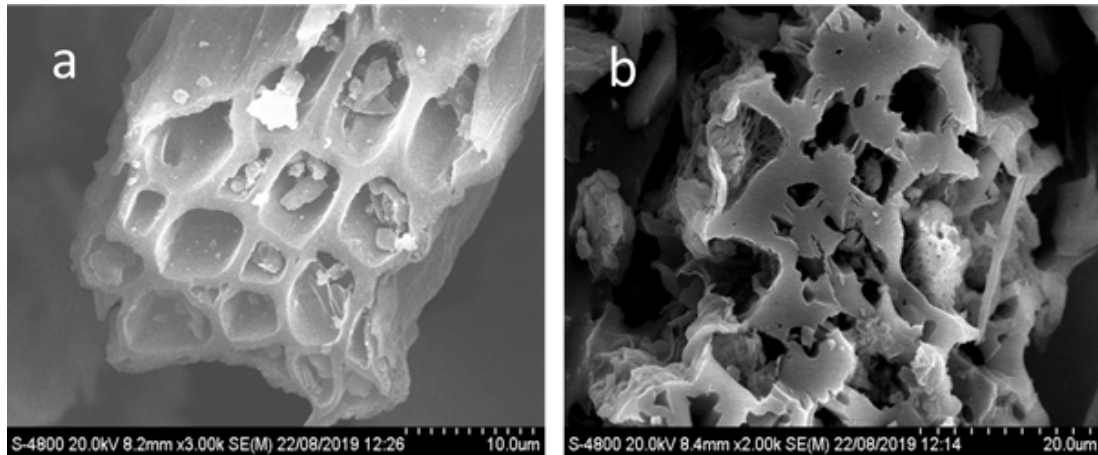
maximum adsorption efficiency with time relation. In these batch experiments, the higher adsorption at a time interval of 60 minutes is 99.79 percent after the increasing time the efficiency of the adsorbent slightly decreases from 90 minutes to 150 minutes after that remain steady adsorption pattern shows BSB 450 in figure No 4.

**Concentration study**

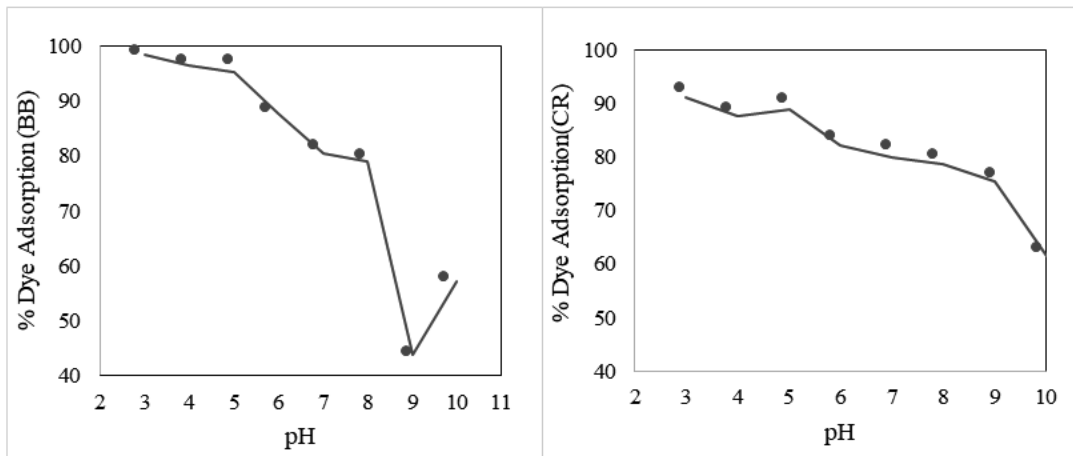
Concentration study and adsorption capacity of BSB 450 observe for Brilliant blue dyes using the range from 1mg/L to 240mg/L. As per dose adsorption observation, we use the dose of 1g/L, BB dye adsorption onto the BSB-450 is shown in Figure 5. In this research study, it is observed that the sorption capacity of BSB 450 continuously increases from 1mg/g to

240mg/g obtained data shows it is 110.14mg/g to 217.26mg/g respectively. The adsorption capability of BSB 450 continuously rises from 1 to 240 mg/L for the synthetic solution, In the batch experiment observed the maximum adsorption capacity of BSB-450 was 217.27 mg/g during the removal of BB dye.

CR dyes concentration study on BSB-450 investigated in the range from 1 mg/L to 240 mg/L laboratories prepared synthetic solution. In batch experiments, a dose of BSB-450 was used is 1 g/L in which is the maximum adsorption of CR on BSB-450 was observed. In the following Figure 8, the obtained data shows concentration versus adsorption of CR, in which the sorption at 1mg/L was 95.33 mg/g, and 120 mg/L to 200 mg/L was



**Fig. 1.** FESEM images for BSB-450 adsorbent (a) before and (b) after adsorption



**Fig. 2.** pH study of BB and CR on BSB 450

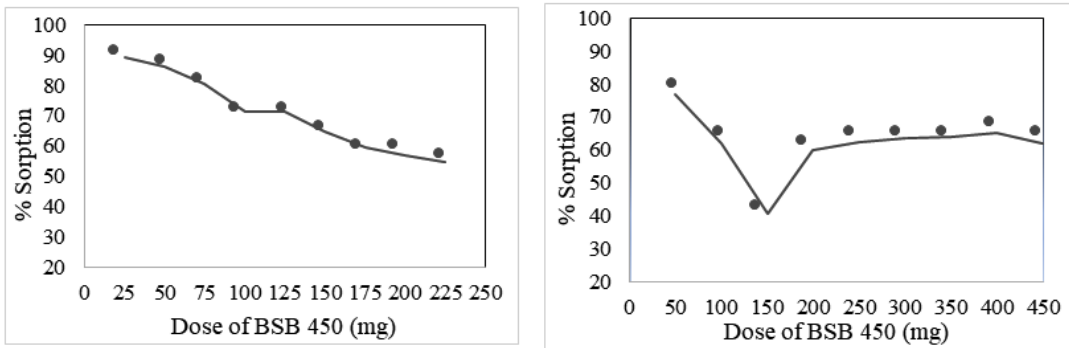
found to be 113.75, 118.56, 129.88, 135.29, 138.99, 135.69, and 124.33 mg/g. In these, the maximum sorption at 200 mg/L was found to be 138.99 mg/g.

**Adsorption Isotherm**

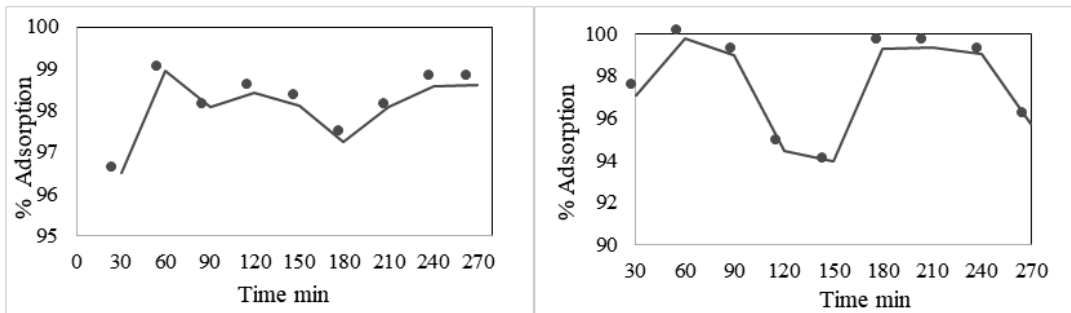
The theoretical models of adsorption isotherms of Freundlich, Langmuir, Temkin, and Dubinin-Radushevich were used and applied for the present adsorption study. These linear and non-linear equation models of adsorption isotherms are listed in Table<sup>5</sup> No. 2. The estimation

of the isotherm constant models plotted using the linear regression equation and the values used to determine the coefficient ( $R^2$ ) for BB and CR are presented in Table No. 3. For the study of BB and CR adsorption onto the BSB 450, the pH is 3, the dose of adsorbent BSB 450 is 25 mg, the contact time is 1 hour, and 303 K normal room temperature.

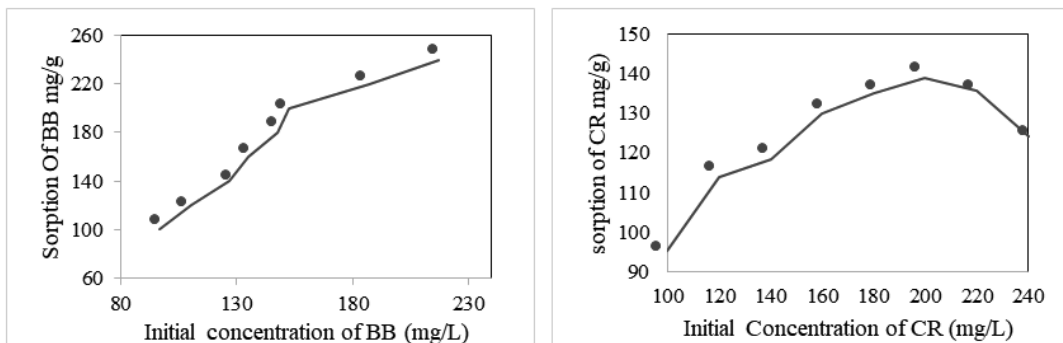
Equilibrium factor ( $R_L$ ) its elaborate and show the characteristics of Langmuir isotherm model it is represents



**Fig. 3.** Dose Study of BB and CR on BSB450



**Fig. 4.** Time Study of BB and CR on BSB 450



**Fig. 5.** Concentration Study of BB & CR on BSB 450

$$R_L = \frac{1}{1 + K_L C_0}$$

The above ( $R_L$ ) values characterised the shape of isotherm its denote when  $0 < R_L < 1$  is favourable = 1 its Linier to corresponds  $> 1$  its unfavourable and whenever value of  $R_L = 0$  its irreversible. BSB 450 examination with BB and CR calculated  $R_L$  values in between 0 and 1 that represent the favourable adsorption of dyes on to BSB450. the initial concentration of dyes used 1 to 240 mg/L. In the presented table no 3 of adsorption isotherm models values obtained from linear equation for BB shows in Langmuir graph value of  $K_L$  (L/mg) is 0.35 and  $q_m$  (mg/g) is 172.41 but the maximum adsorption shows in

Dubinin-Radushkevich is 175.57mg/g. in D-R model  $K_L$  value estimated using intercept of linear plot is 7.29. as well the similarly the maximum  $Q_{max}$  adsorption of CR is found to in Dubinin-Radushkevich model it is 135.18mg/g and  $K_L$  intercept calculated value is 8.5.

Dubinin-Radushkevich isotherm model helps to analyse physical and chemical nature of adsorption by estimating the (E) energy the equation is:

$$E = \frac{1}{\sqrt{2K_{DR}}}$$

From the table no 2 constants  $K_{DR}$  (mol<sup>2</sup>/kJ<sup>2</sup>) and  $q_{DR}$  (mg/g) determined using the linear plot equation. E values shows the nature of

**Table 2.** Non-linear and linear equation of the adsorption isotherms<sup>5</sup>

Isotherm model	Non-linear equation	Linear equation	Plot	Isotherm constants
Langmuir	$q_e = \frac{Q_{max} K_L C_e}{1 + K_L C_e}$	$\frac{C_e}{q_e} = \frac{1}{Q_{max} K_L} + \frac{C_e}{Q_{max}}$	$\frac{C_e}{q_e}$ vs. $C_e$	$K_L$ and $Q_{max}$
Freundlich	$q_e = K_F C_e^{1/n}$	$\log q_e = \log K_F + \frac{1}{n} \log C_e$	$\log q_e$ vs. $\log C_e$	$K_F$ and $n$
Temkin	$q_e = \frac{RT}{b} \ln (K_T C_e)$	$q_e = \frac{RT}{b} \ln K_T + \frac{RT}{b} \ln C_e$	$q_e$ vs. $\ln C_e$	$K_T$ and $b$
Dubinin-Radushkevich	$q_e = q_{DR} e^{-K_{DR} \varepsilon^2}$	$\ln q_e = \ln q_{DR} - K_{DR} \varepsilon^2$ $\varepsilon = RT \ln \left( 1 + \frac{1}{C_e} \right)$	$\ln q_e$ vs. $\varepsilon^2$	$K_{DR}$ and $q_{DR}$

**Table 3.** Adsorption isotherm constant Non-linear and linear equation parameter with coefficient regression adsorption of BB and CR onto BSB 450.

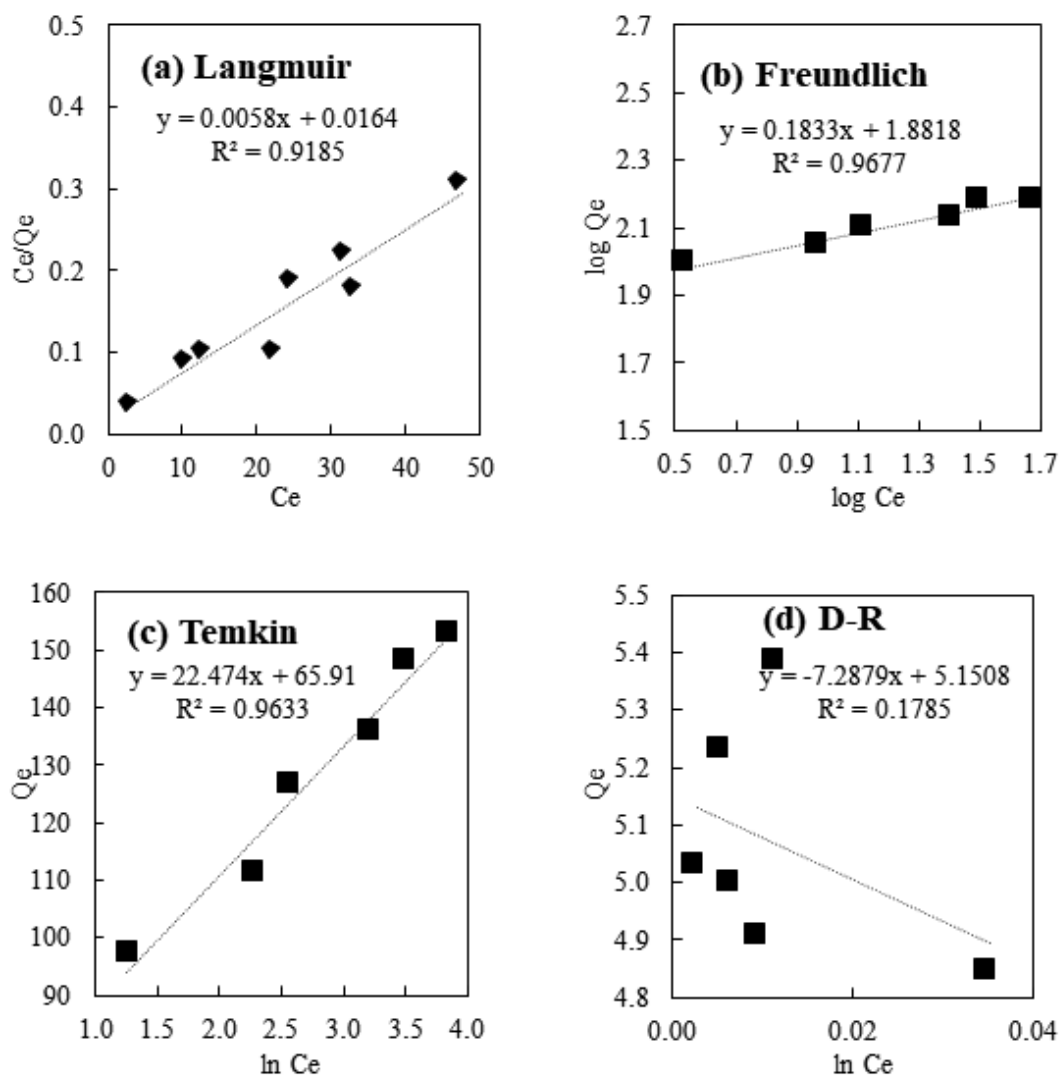
Isotherm model	Parameters	Error Function			
Langmuir	$q_m$ (mg/g)	$K_L$ (L/mg)	$R^2$	$\chi^2$	$\Delta q$
	BB 172.41	0.35	0.9185	41.11	16.8
	CR 129.87	77	0.9938	4.28	15.43
Freundlich	$K_F$ (mg/g)/(mg/L) <sup>n</sup>	1/n			
	BB 6.57	5.45	0.9677	13549.73	98.41
	CR 1.09	5.24	0.6906	56946.18	105.09
Temkin	$K_T$ (L/g)	b (kJ/mol)			
	BB 18.78	8.92	0.9633	61.82	16.82
	CR 4.1	2.42	0.9013	3.67	6.87
Dubinin-Radushkevich	$q_{DR}$ (mg/g)	$K_{DR}$ (mol <sup>2</sup> / KJ <sup>2</sup> )	E (KJ/mol)		
	BB 175.57	7.29	0.26	0.1735	32.61
	CR 135.18	8.5	0.24	0.4738	129.44

adsorption when E value is below 8 kJ/mol physical adsorption process is overriding, E is in 8-16 kJ/mol then occurrence of ion exchange and the range 20-40kJ/mol, shows the chemical nature of adsorption (Gupta et al., 2013). In the present study the value of E(kJ/mol) for both CR and BB its less than 8 kJ/mol which is 0.24 and 0.26 kJ/mol Respectively so its conclude that the physical adsorption takes place in BB and CR onto the BSB 450.

Present study used Freundlich, Langmuir, Temkin and Dubinin-Radushkevich isotherm model from which is best applicable were assessed by using coefficient of determination ( $R^2$ ) data

obtained of linear regression through isotherm equation. From these isotherm model ( $R^2$ ) value is much nearest to unity in Freundlich isotherm model for BB dye and in Langmuir isotherm model for CR dye onto the BSB450; the ( $R^2$ ) value are 0.9677 and 0.9938 respectively.

Present investigation Highest adsorption of BB and CR onto the BSB 450 is 175.57 mg/g and 135.18 mg/g respectively in the Dubinin-Radushkevich model. adsorption in comparison to the previous study is 50 to 100 times greater as demonstrated in table no 4 and 5.



**Fig. 6.** Adsorption isotherm model graph of BB on BSB 450 a) Langmuir b) Freundlich c) Temkin d) Dubinin-Radushkevich

Brilliant blue Remazol adsorption on to the PFPAC<sup>9</sup> is 81.35% , Brilliant blue dyes adsorption on snail shell powder<sup>3</sup> at a varying temperature form 298k to 338k its found to be highest 416.66 mg/g at 328k and low at 308k is 45.45 mg/g, in the present study it was highest (in a percent format) 96.5% .

BB and CR adsorption isotherm study obtained data which is model of isotherm is applicable estimated from the (R<sup>2</sup>) determination

of coefficient obtained from regression isotherm equation. Studied isotherm model Langmuir, Freundlich, Temkin and Dubinin-Radushevich (R<sup>2</sup>) value is less than 1 for both the BB and CR azo dyes adsorption on to BSB 450 which unity closet to each other in the Freundlich model highest than all other model it is 0.9677 for BB and which is best fitted model of adsorption isotherm of brilliant blue for CR value of (R<sup>2</sup>) is the 0.9938 in Langmuir isotherm model respectively. As per data obtained

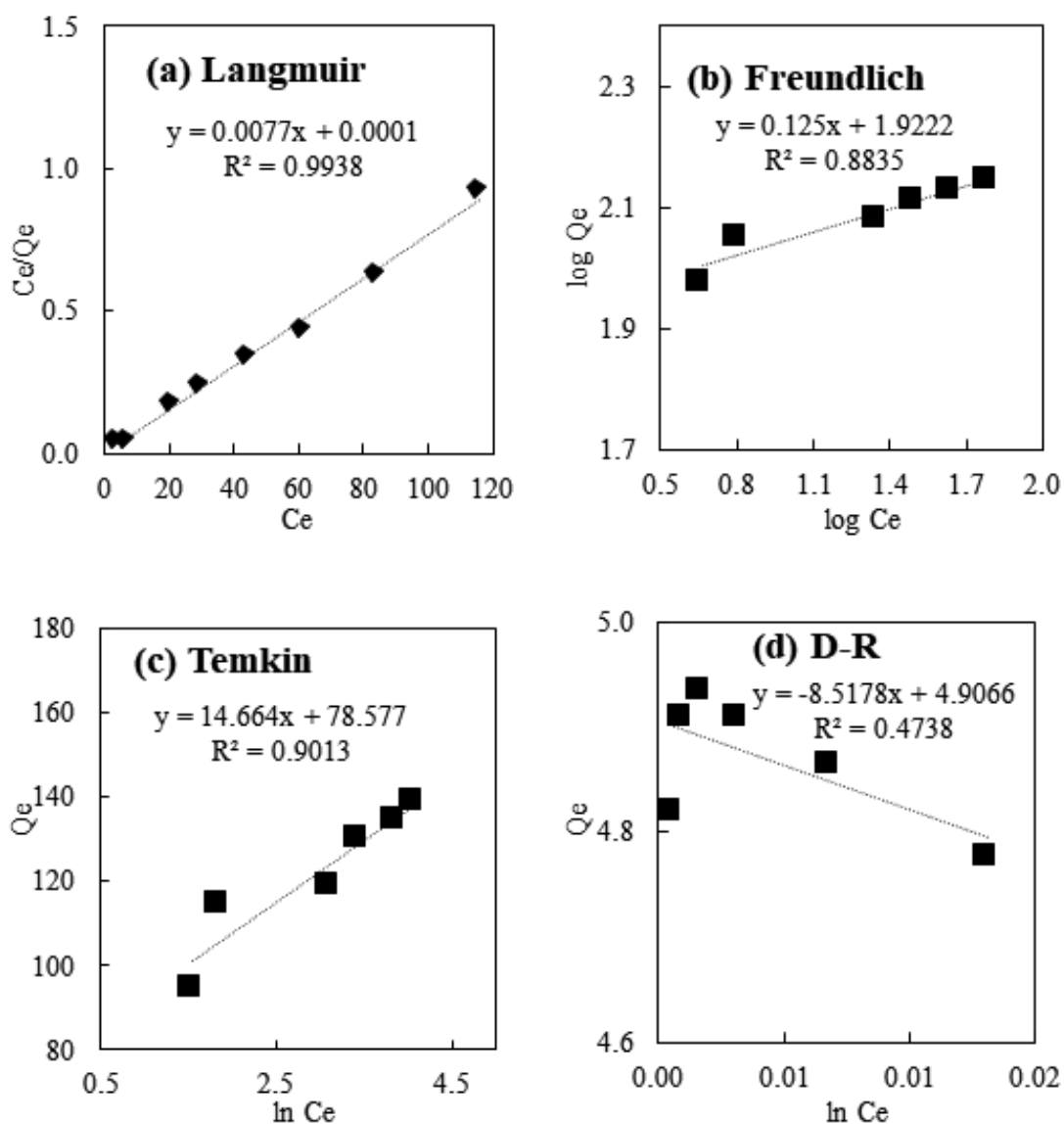


Fig. 7. Adsorption isotherm model graph of CR on BSB 450 a) Langmuir b) Freundlich c) Temkin d) Dubinin-Radushkevich



**Table 4.** Adsorption of Congo red dyes on various adsorbent

Raw material For Biochar/(Adsorbent)	Adsorption mg/g	Reference
p-ECNFs	100.5 mg/g	[19]
o-ECNFs	74.2 mg/g	[19]
m-ECNFs	(47.3 mg/g)	[19]
ECNFs-NH <sub>2</sub>	44.4 mg/g	[19]
ECNFs-COOH	8.9 mg/g	[19]
ECNFs poly(phenylenediamine)	5.6 mg/g	[19]
grafted electrospun carbon nanofibers		
Present Study	175.57mg/g	Present Study

**Table 5.** Adsorption of Congo red dyes on various adsorbent

Raw material For Biochar/(Adsorbent)	Adsorption mg/g	Reference
Coir pith	6.7	[4]
Bamboo dust	101.9	[09]
Coconut shell	188.4	[09]
Groundnut shell	110.8	[09]
Rice Husk	237.8	[09]
Straw carbon	403.7	[09]
Commercial activated carbon	493.8	[09]
Rice husk ash	7.047	[2]
Carbon slurry waste	272.0	[1]
Bael shell	98.03	[14]
Musa Acuminata stem	135.18	Present study

the at a higher concentration range of 1mg/L to 240 mg/L BB and CR the isotherm model Dubinin-Radushkevich is low sorption.

### CONCLUSION

Eco-friendly and cost-effective biochar derived from plant waste material of Musa Acuminata stem (BSB 450) was studied to investigate removal of azo dyes Brilliant Blue BB and Congo Red CR from synthetic aqueous medium by using adsorption isotherm models with batch experiment study. Experimental data suggest that maximum sorption capacity estimated for BB and CR in Dubinin-Radushkevich isotherm is 175.57mg/g and for CR is 135.18mg/g respectively at 303K temperature. Obtained experimental data showed the best fitted isotherm model from R<sup>2</sup> value is for BB is Freundlich and for the CR is Langmuir. For sorption of BB and CR onto BSB 450 the involvements of external forces

estimated from D-R isotherm model indicates the energy involved in batch sorption experiment is insignificant in sorption. These research work suggest the biochar prepared from regional plant waste material is dynamic potential to removal of BB and CR as well as its applicable environmental pollutant removal. BSB 450 is cost-effective material for remediation of wastewater containing dyes, as well adsorption by using biochar is sustainable and nothing harmful to environment techniques. For future study we suggested that Musa acuminata is available worldwide, but it has not been studied for adsorption and preparation of biochar, so it is need of todays to explore the study for removal of pollutant by biochar.

### ACKNOWLEDGEMENTS

I Sincerely Gratitude towards Dr. Babasaheb Ambedkar Research and Training Institute for Providing a Dr. Babasaheb Ambedkar

National Research Fellowship 2018 funded by Department of Social Justice and Special Assistance, Government of Maharashtra, India and also thankful to Research and Development Section and Director, School of Environmental and Earth Sciences, Kavayitri Bahinabai Chaudhari North Maharashtra University Jalgaon, Maharashtra for providing Teaching Associate Award (TAP) with all Research Facility.

#### Conflict of interest

There is no conflict of interest.

#### Funding source

We informed there is not available but we have Award letter No & Date: BARTI/Fellowship/BANRF-2018/19-20/3036. 30/06/2020

### REFERENCES

1. A. Bhatnagar, A.K. Jain, M.K. Mukul, Removal of Congo red dye from water using carbon slurry waste, *Environ. Chem. Lett.*, 2005; **2**:199–202. <https://doi.org/10.1007/s10311-004-0097-0>
2. A.K. Chowdhury, A.D. Sarkar, A. Bandyopadhyay, Rice husk ash as a low-cost adsorbent for the removal of methylene blue and congo red in aqueous phases, *Clean*, 2009; **37**: 581–59. <https://doi.org/10.1002/clen.200900051>.
3. Ala'a H. Al-ogaili and Muneer A. Al-Da'Amry Equilibrium and Thermodynamic studies of Adsorption of Remazol Brilliant Blue dye on snail shell powder 2020 *IOP Conf. Ser.: Mater. Sci. Eng.* 871 012036. <https://doi.org/10.1088/1757-899X/871/1/012036>.
4. C. Namasivayam, D. Kavitha, Removal of Congo red from water by adsorption onto activated carbon prepared from coir pith, an agricultural solid waste, *Dyes Pigments*, 2002; **54**: 47–58. [https://doi.org/10.1016/S0143-7208\(02\)00025-6](https://doi.org/10.1016/S0143-7208(02)00025-6).
5. Choudhary B, Paul D. Isotherms, kinetics and thermodynamics of hexavalent chromium removal using biochar. *J Environ Chem Eng*, 2018; **6**: 2335–2343. <https://doi.org/10.1016/j.jece.2018.03.028>
6. Dinesh Mohan, Ankur Sarswat, Yong Sik Ok, Charles U. Pittman, Organic and inorganic contaminants removal from water with biochar, a renewable, low cost and sustainable adsorbent A critical review, *Bioresource Technology*, 2014; **160**:191-202, ISSN0960-8524, <https://doi.org/10.1016/j.biortech.2014.01.120>.
7. Dixit S, Yadav A, Dwivedi PD, Das M. Toxic hazards of leather industry and technologies to combat threat: A review. *J. Clean. Prod.* 2015; **87**:39–49. <http://dx.doi.org/10.1016/j.jclepro.2014.10.017>
8. Ganpat B. More, Shridhar K. Jadhav and Sanjaykumar R. Thorat: Development of a Novel Submerged Membrane Bioreactor (SMBR) for Treatment of Textile Wastewater. *Ijrat*, 2019; **7**(4):35-46 .
9. Kannan, N., Meenakshi Sundaram, M. Adsorption of Congo Red on Various Activated Carbons. *A Comparative Study. Water, Air, & Soil Pollution*, 2002; **138**: 289–305. <https://doi.org/10.1023/A:1015551413378>
10. Kumar, Nishant & Ved, Akash & Yadav, Ritu & Prakash, Om. A Comprehensive Review on Phytochemical, Nutritional, and Therapeutic Importance of *Musa acuminata*. *International Journal of Current Research and Review*, 2021; **13**: 114-124. <https://doi.org/10.31782/IJCRR.2021.13901>
11. Mohd Azmier, Ahmad, Muhammad Aswar Eusoff, Peter Olusakin Oladoye, Kayode Adesina Adegoke, Olugbenga Solomon Bello, Statistical optimization of Remazol Brilliant Blue R dye adsorption onto activated carbon prepared from pomegranate fruit peel, *Chemical Data Collections*, 2020; **28**. <https://doi.org/10.1016/j.cdc.2020.100426>
12. Namasivayam C, Muniasamy N, Gayatri K, et al. Removal of dyes from aqueous solutions by cellulosic waste orange peel. *Bioresour Technol*, 1996; **57**:37–43. [https://doi.org/10.1016/0960-8524\(96\)00044-2](https://doi.org/10.1016/0960-8524(96)00044-2)
13. Namasivayam C, Prabha D, Kumutha M. Removal of direct red and acid brilliant blue by adsorption on to banana pith. *Bioresour Technol*, 1998; **64**:77–79. [https://doi.org/10.1016/S0960-8524\(97\)86722-3](https://doi.org/10.1016/S0960-8524(97)86722-3)
14. Rais Ahmad, Rajeev Kumar Adsorptive removal of congo red dye from aqueous solution using bael shell carbon *Applied Surface Science*, 2010; **257**: 1628–1633. <https://doi.org/10.1016/j.apsusc.2010.08.111>
15. Saxena, Gaurav & Chandra, Ram & Bharagava, Ram. Environmental Pollution, Toxicity Profile and Treatment Approaches for Tannery Wastewater and Its Chemical Pollutants. *Reviews of environmental contamination and toxicology*, 2016; **240**. [https://doi.org/10.1007/398\\_2015\\_5009](https://doi.org/10.1007/398_2015_5009).
16. Simmonds NW, Shepherd K. The taxonomy and origins of cultivated bananas. *Bot. J. Linn. Soc.* 1955; **55**:302–12. <https://doi.org/10.1111/j.1095-8339.1955.tb00015.x>
17. Nayar, NM. The Bananas: *Botany, Origin, Dispersal*. 2010. <https://doi.org/10.1002/9780470527238.ch2>.

18. Srivatsav, Prithvi Bhargav, Bhaskar S. Shanmugasundaram, Vignesh Arun, Jayaseelan Gopinath, Kannappan P. Bhatnagar, Amit Biochar as an Eco-Friendly and Economical Adsorbent for the Removal of Colorants (Dyes) from Aqueous Environment: *A Review Water* 2020; **12**:12- 2073-4441 DO <https://doi.org/10.3390/w12123561>
19. Thamer BM, Aldabahi A, Moydeen A M, et al. Effective adsorption of Coomassie brilliant blue dye using poly (phenylene diamine) grafted electrospun carbon nanofibers as a novel adsorbent. *Mater Chem Phys*, 2019; **234**:133–145. <https://doi.org/10.1016/j.matchemphys.2019.05.087>
20. Walker GM, Hansen L, Hanna JA, Allen SJ. Kinetics of a reactive dye adsorption onto dolomitic sorbents. *Water Res*, 2003; **37**:2081–2089. [https://doi.org/10.1016/S0043-1354\(02\)00540-7](https://doi.org/10.1016/S0043-1354(02)00540-7)